



Weiti Boating Club (INC)

PO Box 207 Whangaparaoa

Weiti Boating Club - Short Handed Programme

2018 - 19

Organising Authority: Weiti Boating Club

Fairhaven Walk Whangaparaoa.

P: (09) 424 5905 W: weiti.co.nz

Notice of Race and Sailing Instructions

1.0 Rules

- 1.1 The regatta will be governed by the 'rules' as defined in *The Racing Rules of Sailing*.
- 1.2 For Keel Yachts the YNZ Safety Regulations Part II, Category 4 shall apply.
- 1.3 For Trailer Yachts the YNZ Safety Regulations Part V, Category A shall apply.
- 1.4 All yachts must be equipped with a VHF radio capable of transmitting and receiving on all channels.
- 1.5 Boats may fly extras (Extras are defined as sails not usually used to advantage to windward).
- 1.6 Races 1 and 3 are designated as single-handed races and as such shall have a crew of no more than the skipper
- 1.7 Races 2 and 4 are designated as Male / Female races and as such shall have a crew of no more than one male and one female. These races may be sailed single handed.
- 1.8 RRS 52 will be changed as follows: Autohelms and electric winches are allowed
- 1.9 RRS Appendix T will apply (Arbitration)

2.0 Eligibility & Entry

- 2.1 Entries will be accepted from Keel Yachts and Trailer Yachts registered with YNZ and whose owners/skippers are financial members of a yacht club affiliated to YNZ.
- 2.2 WBC reserve the right to accept or refuse any entry.
- 2.3 Entries must be made to the Weiti Boating Club using the online entry form on the Club's website, with payment of the designated entry fee. **Entrants must provide a mobile phone number that they can be contacted on while racing.**
- 2.4 Only series entrants will be eligible for series points. Entries for individual races must be received and fees paid by 1200 hrs on the Saturday preceding a scheduled race day.

Entry Fees: \$20 for series or \$15 per race

3.0 Notices to Competitors

- 3.1 Notices may be posted on one or more of the following:
 - 3.1.1 The Weiti Boating Club Website www.weiti.co.nz
 - 3.1.2 Advised by Txt to the mobile number given in 2.3 above.
 - 3.1.3 Advised by email to the email address loaded with the online entry form
 - 3.1.4 On the official notice boards located at the WBC clubrooms.



Weiti Boating Club (INC)

PO Box 207 Whangaparaoa

4.0 Changes to Sailing Instructions

- 4.1 Any change to the sailing Instructions will be posted at least 2 hours prior to the scheduled start of the day's racing, on the day it will take effect.
- 4.2 Notices of cancellation will endeavor to be sent by email and /or Txt to the email address /mobile number given in 2.3 above, at least 1 hour prior to the scheduled start of the days racing.

5.0 Schedule of Races

Sponsor: TBC

Entry fee: \$20 / Mini series

Race	Day	Date	Mini series	Trophy
Race 1	Su	18-11-2018	S-Handed	Ann Jacobson Memorial Cup
Race 2	Su	2-12-2018	M / F	Contessa cup
Race 3	Su	3-2-2019	S-Handed	McGuire Family trophy
Race 4	Su	14-4-2019	M / F	Contessa cup

Warning signal	High tide		Low tide	
	Time	Ht	Time	Ht
1255	1625	2.8	0958	1.1
1255	1602	3.1	0935	0.7
0855	0730	3.0	1325	0.9
1155	1427	3.0	0807	0.9

6.0 Class Flag

- 6.1 All boats will race in one class and fly a White class flag.

7.0 Racing Area

- 7.1 The races will be held on the waters of the Hauraki Gulf and Waitemata Harbour.

8.0 Race control

- 8.1 The Race Committee shall either provide a start vessel or designate one boat participating in the race as the **Race Start Vessel** and notify all entrants accordingly.
- 8.2 The Race Committee shall designate one boat participating in the race as the **Committee Boat** for the race and notify all entrants accordingly. Race control will move from the Race Start Vessel to the Committee Boat following completion of the start sequence.
- 8.3 A boat that retires from a race shall notify the Committee Boat immediately. Acknowledgement is required from the Committee Boat.
- 8.4 The Race Committee may provide a **Race Finish Vessel**. If so, all entrants will be notified accordingly that the finish procedure will be as per Addendum A 3.0 & 4.0.

9.0 Radio Communications

- 9.1 The race channel to be used is VHF Radio Ch 77. All boats must maintain a constant radio watch on this channel.
- 9.2 For all WBC controlled races, the call sign for the Race Start Vessel and the Committee Boat is "WEITI Race Control".

10.0 Course to be sailed

- 10.1 The Courses are detailed in Addendum B.
- 10.2 No later than the warning signal, the Race Start Vessel will display the course number on a board with black digits on a white background



Weiti Boating Club (INC)

PO Box 207 Whangaparaoa

11.0 The Start

- 11.1 The start line will be in the vicinity of Arkles Bay. The starting line will be between a staff displaying an orange flag on the Race Start Vessel at the starboard end and an orange conical buoy at the port end. This is detailed in addendum A.
- 11.2 A boat that does not start within 10 minutes after her starting signal will be scored DNS (Did Not Start). This changes RRS A4 and A5
- 11.3 If any boat or part of a boat, or crew, is on the course side of the starting line at the starting signal and is identified, the Race Start Vessel shall attempt to broadcast her number on VHF Radio Ch 77. Failure to make a broadcast or to time it accurately will not be grounds for redress. This changes RRS 62.1 (a). (Redress)

12.0 The Finish

- 12.1 The finishing line will be as described in Addendum A.

13.0 Time limits

- 13.1 The time limit for all races in this event is 1900 hours on the day of the race.

14.0 Protests and requests for Redress

- 14.1 For protests where only a rule of Part 2 (When boats Meet) is alleged to have been broken, an arbitration hearing will be offered prior to any hearing.
- 14.2 A protest shall be lodged in the appropriate format (forms are available from the Club House or YNZ Website) within the protest time limit and delivered to a member of the Sailing Committee.
- 14.3 The time limit for lodging a protest is 120 minutes after the last boat has finished.

15.0 Handicapping

- 15.1 Handicapping will be in accordance with the WBC Handicapping system.
- 15.2 Finishing times should be sent by TXT to the number advised..

16.0 Scoring

- 16.1 There will be no discards for this series. All races will count for series scoring.
- 16.2 RRS Appendix A9 will be used

17.0 Safety Regulations

- 17.1 Skippers are required to maintain a written list on board of all crew for the day (including the skipper), their next-of-kin or contact person, and a contact phone number. All crew must be made aware of the location of this list before departing their marina / mooring.
- 17.2 All entrants are required to register with the Race Committee Vessel via VHF Radio Ch 77, before the warning signal advising the boat name and the number of people on board.
- 17.3 All skippers must take responsibility to ensure at all times their boat complies with the relative safety regulations in Sailing Instructions Rule 1.0 above
- 17.4 Boats may be inspected for compliance with the safety regulations at the discretion of the Race Committee



Weiti Boating Club (INC)

PO Box 207 Whangaparaoa

18.0 Prizes

- 18.1 Day race results will be advised by email as soon as practicable after each race.
- 18.2 Series results will be advised as soon as practicable following the completion of Race 4.

19.0 Insurance

- 19.1 Each participating boat shall be insured with valid Third-Party insurance - liability insurance with a minimum cover of \$5M per incident or equivalent

20.0 Disclaimer of Liability

- 20.1 Competitors participate in the regatta entirely at their own risk. See RRS 4, Decision to Race. The responsibility for a boat's decision to participate in a race or to continue racing is hers alone.
- 20.2 The Organising Authority will not accept any liability for material damage or personal injury or death sustained in conjunction with, prior to, during, or after the regatta.

For further details contact the administrative office at:

Weiti Boating Club

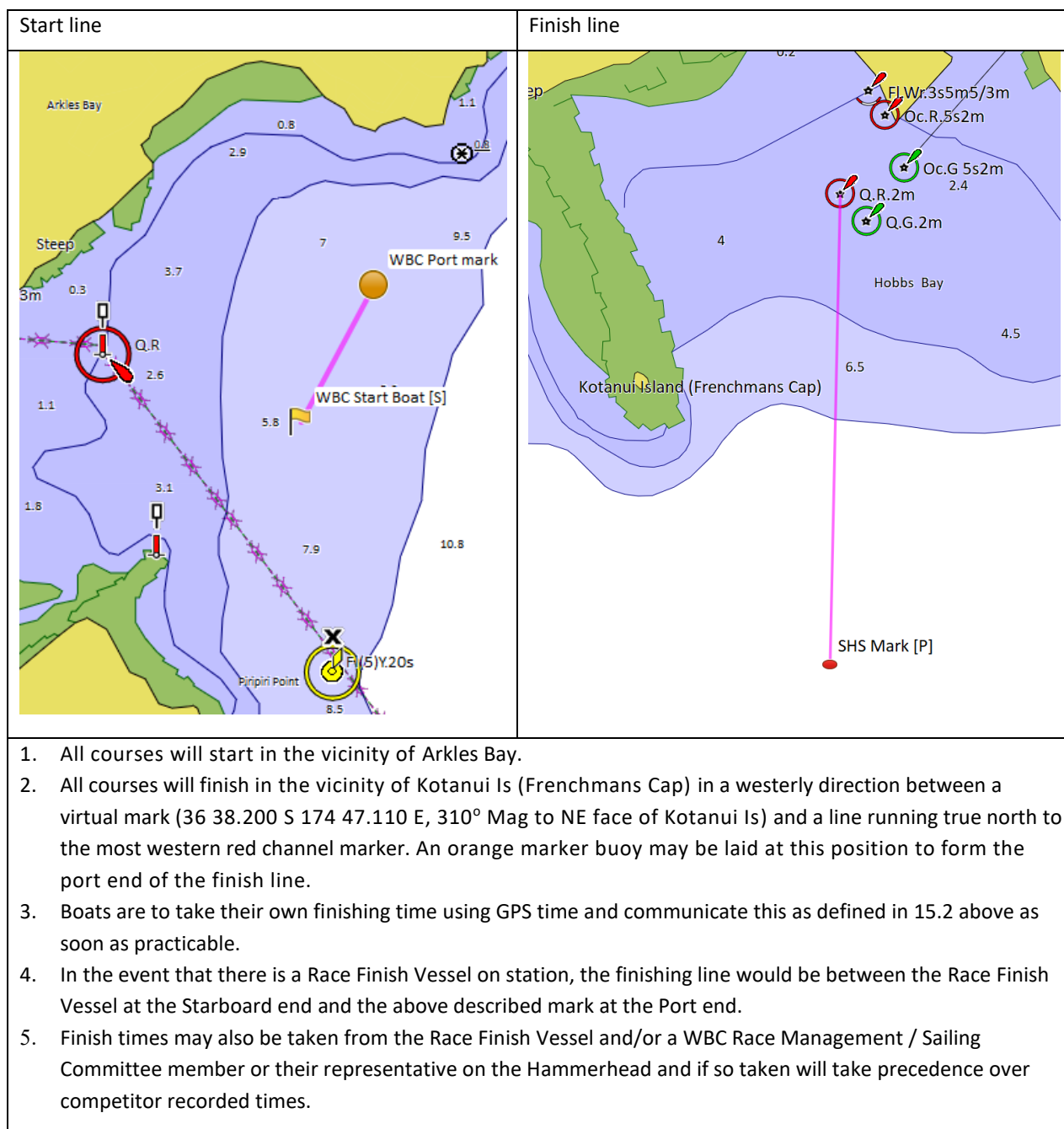
P: 09 424 5905

E: weiti@xtra.co.nz

W: weiti.co.nz



Addendum A: SHS START / FINISH LINES





Addendum B: Courses & marks

Course #	Course details	Nms
1	Start – Haystack (S) – McKenzie Buoy (S) – GH Buoy (P) - Finish	26.0
2	Start – McKenzie Buoy (P) – Haystack (P) – GH Buoy (S) - Finish	26.0
3	Start – Haystack (P) – East Cardinal (P) - GH Buoy (S) - Finish	22.2
4	Start – East Cardinal (S) - Haystack (S) – GH Buoy (S) - Finish	21.6
5	Start – Rangitoto (P) - GH Buoy (S) -Finish	28.7
6	Start – Rangitoto (S) - GH Buoy (P) - Finish	28.9
7	Start – Flat Rock (P) – Motuora (P) – GH Buoy (S) - Finish	33.9
8	Start – Motuora (S) – Flat Rock (S) – GH Buoy (S) - Finish	33.9
9	Start – Navy Buoy (S) – GH Buoy (S) - Finish	7.5
10	Start – Marine-Sth (P) - GH Buoy (P) - Finish	6.5
11	Start – Navy Buoy (S) – Haystack (S) – GH Buoy (S) - Finish	19.6
12	Start – Haystack (P) – Navy Buoy (P) – GH Buoy (S) - Finish	20.5
13	Start – McKenzie Buoy (P) – Navy Buoy (P) - GH Buoy (S) - Finish	22.8
14	Start – Navy Buoy (S) – McKenzie Buoy (S) - GH Buoy (P) - Finish	21.9
15	Start – Torbay Buoy (P) – Haystack (P) – GH Buoy (S) - Finish	21.5
16	Start – Haystack (S) – Torbay Buoy (S) - GH Buoy (P) - Finish	21.6
17	Start – Marine-Nth (P) - Torbay Buoy (P) – GH Buoy (P) – Finish	9.9
18	Start – Marine-Nth (P) - Marine-Sth (P) - GH Buoy (P) - Finish	7.4
19	Start – Torbay Buoy (P) – Navy Buoy (P) – GH Buoy (S) - Finish	14.8
20	Start – East Cardinal (S) – GH Buoy (S) - Finish	14.5
21	Start – Rakino Is (P) – Otata Is (P) - East Cardinal (P) – GH Buoy (S) - Finish	28.8
22	Start – Rakino Is (P) – D’Urville Rocks (P) - East Cardinal (P) – GH Buoy (S) - Finish	34.1

Mark locations are as per table below:

Mark	Lat.	Long.
Start (approximate point for reference)	36 38.200 S	174 47.100 E
GH Buoy	36 39.130 S	174 48.030 E
McKenzie Buoy	36 46.721 S	174 49.115 E
East Cardinal	36 36.497 S	174 55.340 E
Torbay Buoy	36 42.500 S	174 47.300 E
Navy Buoy (Eastern buoy)	36 36.922 S	174 50.654 E
Haystack (Orarapa Island)	36 41.891 S	174 57.266 E
Marine-Nth (Northern marine marker) Piripiri Point	36 39.761 S	174 45.282 E
Marine-Mid (Middle marine marker)	36 40.451 S	174 45.900 E
Marine-Sth (Southern marine marker)	36 41.122 S	174 46.488 E