



**Weiti Boating Club (INC)**

PO Box 207 Whangaparaoa

## **Weiti Boating Club**

### **Standard Sailing Instructions**

(See Cruising supplement for cruising destination finish lines)

## 1.0 Precedence of documents

Should there be any variance between any printed version of these Rules and the version current on the WBC ([weiti.co.nz](http://weiti.co.nz)) website, the version current on the website will prevail. Where there is a conflict between these Rules and the Notice of Race for any series, these Rules will prevail unless intent to alter these Rules has been clearly noted in the Notice of Race.

## 2.0 Rules

- 2.1 All races and series will be governed by the I.S.A.F Racing Rules of Sailing current on the day of actual race.
- 2.2 All boats must comply with the YNZ Safety Regulations:
  - 2.2.1 Winter Series and Ladies Race:
    - 2.2.1.1 Keelboats & Multihulls, Part II, Category 5
    - 2.2.1.2 Trailer Yachts; Part V Category B
    - 2.2.1.3 Ballasted Open Yachts Part 1
  - 2.2.2 Summer Cruising and Short Handed Series
    - 2.2.2.1 Keelboats and Multihulls, Part II Category 4
    - 2.2.2.2 Trailer Yachts, Part V Category A
  - 2.2.3 Great Barrier race
    - 2.2.3.1 All boats must comply with Part II Category 4, including the additional requirements defined in the Great Barrier Race safety declaration
- 2.3 All yachts must be equipped with a VHF radio capable of transmitting and receiving on all channels
- 2.4 No boat shall discharge trash into the water
- 2.5 One design yachts must conform to their International / National Class Rules.
- 2.6 Boats may only fly extras (*Extras are defined as sails not usually used to advantage to windward*) if this has been allowed for within the Notice Of Race (NOR) for each specific series.
- 2.7 Any rigging and/or equipment may be operated or adjusted using any available power – e.g. autohelms/tiller pilots and electric winches (this varies Rule 52)

## 3.0 Eligibility and Entry

- 3.1 Entries will be accepted from Keel Yachts, Multihulls and Trailer Yachts registered with YNZ and whose owners/skippers are financial members of a yacht club affiliated to YNZ.
- 3.2 WBC reserves the right to accept or refuse any entry.
- 3.3 Forms must be completed in full, either through the Club website or placed with the required entry fee, in the entry box at the Clubhouse.

- 3.4 Only series entrants will be eligible for series points. Entries for individual races must be received and fees paid to the Race Committee 2 hours prior to the start of the race.

#### **4.0 Notices to Competitors**

- 4.1 Notices to competitors will be posted on the official notice boards located within the WBC clubrooms.

- 4.2 In addition, Notices may be posted on:

- 4.2.1 The WBC Info Line (09 424 4452)
- 4.2.2 The Weiti Boating Club Website [www.weiti.co.nz](http://www.weiti.co.nz)
- 4.2.3 Advised by Txt to boats who have supplied a mobile phone number to the Race Committee

Note: Failure to comply with one or more of the above additional methods of notification shall not in itself supply grounds for redress.

#### **5.0 Changes to Sailing Instructions**

- 5.1 Any Change to the Sailing Instructions will be posted at least 2 hours prior to the scheduled start of the day's racing, on the day it will take effect
- 5.2 Notices of cancellation by txt will be posted at least 1 hour prior to the scheduled start of the days racing.

#### **6.0 Signals Made Ashore**

- 6.1 Signals made ashore will be displayed at the Weiti Boating Club flagpole.

#### **7.0 Schedule of Races**

- 7.1 The schedule of races is as per the Notice Of Race (NOR) for each specific series.
- 7.2 Where a "spare day" is listed in the NOR, the "Spare race" will only be sailed when one or more of the races otherwise scheduled is cancelled.

#### **8.0 The Courses**

- 8.1 Courses to be sailed will be specified in the NOR for each series.
- 8.2 Course to be used will be selected from the courses shown in Appendices A through D attached to these sailing instructions.
- 8.3 For courses chosen from Appendices C & D, the actual course to be sailed will be displayed on the Committee Boat not later than 10 minutes prior to the first warning signal.
- 8.4 For courses from Appendix B, the number of legs to be sailed will be displayed on the Committee Boat not later than 10 minutes prior to the first warning signal.
- 8.5 Courses may be shortened, abandoned or alternate destinations substituted during the race at the Race Committees discretion. Notice of such change shall be broadcast on VHF Ch 66 (or Ch 1 if out of range of CH 66) 3 times at 15 minutes and 45 minutes past the hour repeated for the

duration of the race. The Race Committee may notify boats by txt where a mobile phone number has been provided (this varies Rule 32).

## **9.0 Course Flags**

- 9.1 Olympic Course – Port Rounding – **RED**
- 9.2 Windward/Leeward Course – **BLUE**
- 9.3 All Other Courses – **GREEN**

## **10.0 Marks**

- 10.1 A description of all marks is contained in the relevant course appendices.

## **11.0 The Start**

- 11.1 Races will be started using Rule 26 with the warning signal for the first fleet made 5 minutes before the starting signal.
- 11.2 The warning signal for each succeeding class shall be made with or after the starting signal of the preceding class.
- 11.3 The starting line will be between a pole flying an Orange flag on the Committee Boat at the starboard end and an orange conical buoy at the other. This flag (the “attention signal”) will be displayed with one sound signal, five minutes prior to the scheduled "warning signal" for the first race of the day. This instruction will not apply after a postponement, general recall or abandonment.
- 11.4 Where there is more than one fleet to be started, the faster boats (White division) will usually start first.
- 11.5 A yacht starting more than 10 minutes after her starting signal will be scored DNS (Did Not Start) *This Changes Rule A4.1 Low Point and Bonus Scoring Systems.*
- 11.6 No engines shall be used after the preparatory signal for the race is given.
- 11.7 If any boat or part of a boat, or crew, is on the course side of the starting line at the starting signal and is identified, the race committee shall attempt to broadcast her number on VHF Ch 66. Failure to make a broadcast or to time it accurately will not be grounds for redress. This changes Rule 62.1 (a). (Redress)
- 11.8 All entrants are required to register with the committee boat before the start and supply the number of people on board

## **12.0 The Finish**

- 12.1 The finish line will be between a pole on the committee boat at the starboard end and an orange conical buoy at the other (unless provided for otherwise in specific courses and/or NORs).

### 13.0 Time Limits

13.1 The time limits to be applied for each race format are as below:

Race Format	Time Limit first boat	Time allowed for other boats
Olympic / Triangle	120 minutes	60 minutes
W/Leeward	120 minutes	60 minutes
Bay Race	No time limit	
Great Barrier	No time limit	

Race Format	Time Limit all boats
Cruising -Up to 20 miles	360 minutes
Cruising - More than 20 miles	480 minutes

13.2 A boat failing to finish within the “time allowed for other boats” after the first boat of its fleet finishes the course will be scored DNF (Did Not Finish) *This changes Rules 35 and A4.1 (Time Limit and Scores and Low Points and Bonus Points System).*

### 14.0 Protests and Requests for Redress

14.1 Immediately after finishing, a boat intending to protest shall, in addition to fulfilling the requirements of rule 61.1(a) (*Informing the Protestee*) inform the Committee Boat of her intention to protest and the identity of the boat protested against **AND** receive an acknowledgement from the Committee Boat. If Committee Boat is not on station, then notify Race Officer by any means available of intention to protest.

14.2 For protests where only a rule of part 2 (*When boats Meet*) is alleged to have been broken, an arbitration hearing will be offered prior to any hearing.

14.3 A protest shall be lodged on the appropriate form (available in the Club House) within the protest time limit, and handed to a member of the sailing committee.

14.4 The time limit for lodging a protest is 120 minutes after the last boat of the final fleet has finished.

### 15.0 Handicapping

15.1 Handicapping will be in accordance with the Handicapping system of the Organising Authority for each event.

15.2 For combined events with GHYC, initial handicaps will be agreed between the two clubs. One off adjustments may be made during the season where required, upon agreement between both clubs.

## **16.0 Scoring**

- 16.1 Four (4) races are required to be completed to constitute a series.
- 16.2 Each yacht's series score will be the total of her race scores with her worst score discarded if seven (7) races are completed.

## **17.0 Safety Regulations**

- 17.1 Any boat that retires from a race shall notify the Committee Boat immediately using VHF Ch 66 and/or txt.
- 17.2 Boats may be inspected for compliance with the safety regulations at the discretion of the race committee
- 17.3 Any sailor sailing "Single-handed" in a race or series is strongly advised to wear an appropriate lifejacket and carry on his/her person an appropriate means of communicating distress (e.g. Personal Locator Beacon/Hand held VHF Radio) at all times.
- 17.4 Skippers are required to maintain a written list on board of all crew for the day (including the skipper), their next-of-kin or contact person, and a contact phone number. All crew must be made aware of the location of this list before departing their mooring.

## **18.0 Radio Communications**

- 18.1 The standard race channel to be used is VHF Ch.66. All boats must maintain a constant radio watch on this channel.
- 18.2 For all WBC controlled races the call sign for the Committee Boat is "WEITI PATROL".
- 18.3 For all GHYC controlled races the call sign for the Committee Boat is "Olympus".

## **19.0 Prizes**

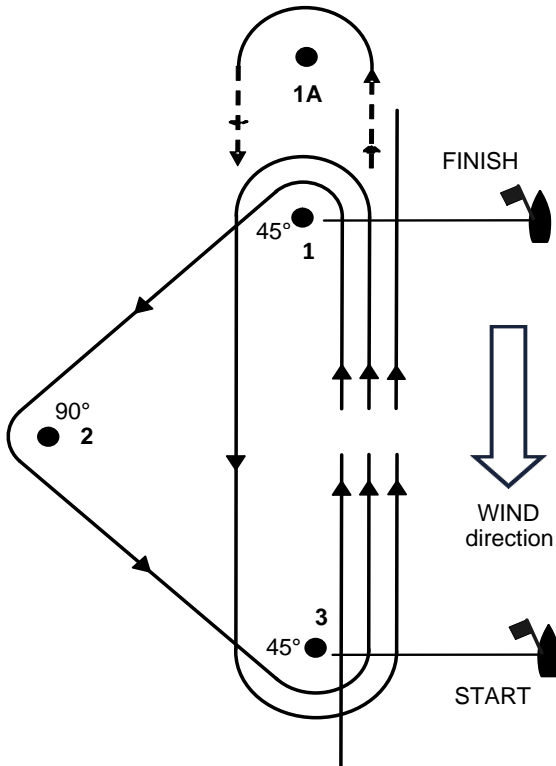
- 19.1 Prizes will be awarded at the completion of each race day.
- 19.2 Prizes will also be awarded for overall winners of race series at an appropriately scheduled "Prize giving" event.

## **20.0 Disclaimer of Liability**

- 20.1 Competitors participate entirely at their own risk. See RRS rule 4, Decision to Race.
- 20.2 The Organising Authority will not accept any liability for material damage or personal injury or death sustained in conjunction with or prior to, during, or after the regatta.

## APPENDIX A: OLYMPIC COURSES

A1 – Port course (all marks to port – Red course flag)



White Fleet            START,1,2,3,1A,3,FINISH

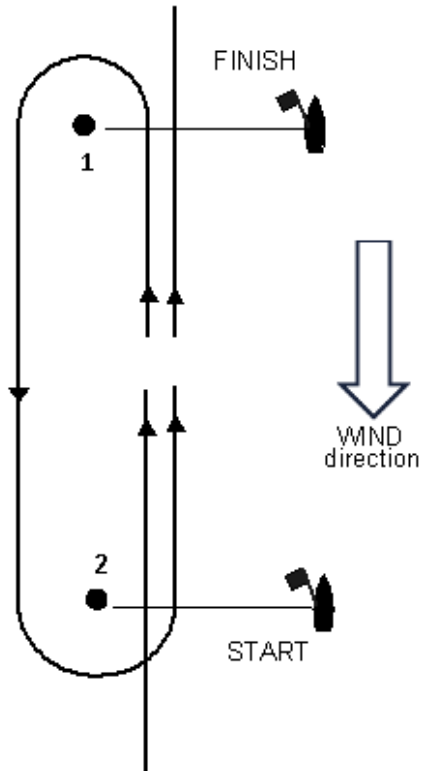
Yellow Fleet            START,1,2,3,1,3,FINISH

**Note:** distance from START (3) to Mark 1A to be approximately 150% of distance from START (3) to Mark 1 and will be decided on the day by the race officer.

## APPENDIX B: WINDWARD LEEWARD COURSES

Number of windward legs to be sailed will be displayed on the Committee Boat and broadcast on VHF channel 66 not later than the first warning signal for each fleet.

**A1** – Port course (all marks to port – Red course flag)





## APPENDIX C: SHORT-HANDED SERIES COURSES

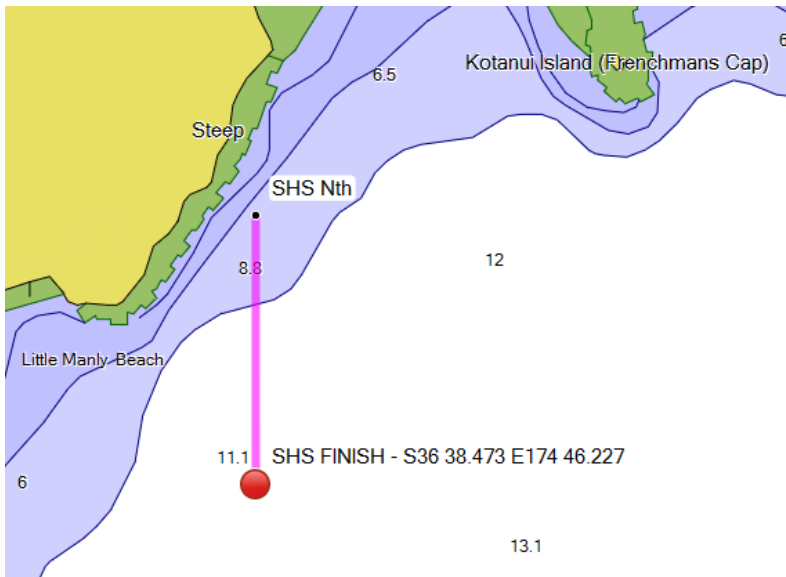
Course #	Course details	Nms
1	Start – Haystack (S) – McKenzie Buoy (S) – Finish	27
2	Start – McKenzie Buoy (P) – Haystack (P) – Finish	27
3	Start – Haystack (P) – Tiri (P) – Finish	25
4	Start – Tiri (S) – Haystack (S) – Finish	25
5	Start – Rangitoto (P) - Finish	29
6	Start – Rangitoto (S) - Finish	29
7	Start – Flat Rock (P) – Motuora (P) – Finish	36
8	Start – Motuora (S) – Flat Rock (S) – Finish	36
9	Start – Navy Bouy (S) - Southern Long Bay Marine marker (S) – Finish	13.2
10	Start – Southern Long Bay Marine marker (P) – Navy Bouy (P) - Finish	13.2
11	Start – Navy Buoy (S) – Haystack (S) – Finish	21
12	Start – Haystack (P) – Navy Buoy (P) – Finish	21
13	Start – McKenzie Buoy (P) – Navy Buoy (P) - Finish	25
14	Start – Navy Bouy (S) – McKenzie Buoy (S) - Finish	25
15	Start – Southern Long Bay Marine marker (P) – Haystack (P) – Finish	21
16	Start – Haystack (S) – Southern Long Bay Marine marker (S) – Finish	21
17	Start – Torbay Buoy (P) – GH Buoy (P) – Finish	9.7
18	Start – GH Buoy (S) – Torbay Buoy (S) - Finish	9.7

Mark locations are as per table below:

Mark	Lat.	Long.
GH Buoy	36 39.13 E	174 48.03 E
McKenzie Buoy	36 46.84 S	174 49.05 E.
Southern Long Bay Marine marker	36 41.156 S	174 46.527 E
Torbay Buoy	36 42.50 S	174 47.30 E
Navy Buoy (Eastern buoy)	36 37.1126S	174 51.215E
Haystack (Orarapa Island)	36 41.865S	174 57.283E
SHS Finish mark, Little Manly Beach	36 38.473S	174 46.227E

## Appendix C: SHS START / FINISH LINES

1. All courses will start and finish in the vicinity of Little Manly Beach.
2. The finishing line will be between the start mark at the **port** end and the pole with an orange flag on the committee boat.
3. In the event that the committee boat is not on station, the finishing line would be due North of GPS Ref pt: S36 38.473 E174 46.227 for all courses. This reference point must be left to **port**. Boats using this method are to take their own finishing time and communicate this to the Race Officer as soon as practicable.



## APPENDIX D: SUMMER CRUISING SERIES RACES

All courses - boats must pass to seaward of Wellington rock

<u>Course</u>	<u>Course description</u>
1	<b>Kawau – Bostaquet Bay 14.8 Nm</b> [Navy Buoy (P)]
2	<b>Kawau via Motuora – Bon Accord 17.2 Nm</b> [Navy Buoy (P), Motuora Island (S), Motutara Island (S)]
3	<b>Kawau – Mansion House Bay 14.7 Nm</b> Navy Buoy [P], Passage Reef. [P], Beehive Is [P]
4	<b>Motuora Island 13.0 Nm</b> [Navy Buoy (P), Motuora Island (S)]
5	<b>Mahurangi 13.2 Nm</b> [Navy Buoy (P), Saddle Island (S)]
6	<b>Rangitoto- Islington Bay 13.9 Nm</b> [Rangitoto(P), Iliomona Rock (P)]
7	<b>Ponui – Shark Bay 23.8 Nm</b> [Rakino (P), Waiheke (P)]
8	<b>Rakino Island – Woody Bay 9.6 Nm</b> [Direct]
9	<b>Waiheke – Oneroa 14.5 Nm</b> [Rakino (P)]
10	<b>Waiheke – Rocky Bay 18.9 Nm</b> [Rakino (P)]
11	<b>Waiheke – Huruhi Bay 15.9 Nm</b> [Rakino (P)]
12	<b>Motuihe Island 13.9 Nm</b> [Rakino (P), Motutapu (S)]
13	<b>Waiheke – Man-O’ War Bay 26.1 Nm</b> [Rakino (P), Waiheke(S)]
14	<b>Te Kouma –34.2 Nm</b> [Waiheke (S)]

Note: see Cruising supplement for finish line coordinates

Day courses: to be used in the event that conditions prevent one of the above courses being sailed. The finish line for these courses will be as per Appendix C, with the after race event being held in the clubrooms.

Course #	Course details	Nms
15 (9)	Start – Navy Bouy (S) - Southern Long Bay Marine marker (S) – Finish	13.2
16 (10)	Start – Southern Long Bay Marine marker (P) – Navy Bouy (P) - Finish	13.2
17	Start – Torbay Buoy (P) – GH Buoy (P) – Finish	9.7
18	Start –GH Buoy (S) – Torbay Buoy (S) - Finish	9.7

**Notes:**