



Weiti Boating Club (INC)
PO Box 207 Whangaparaoa



WBC Summer Cruising Series 2019 - 20

Organising Authority Weiti BC

Combined races in conjunction with Gulf Harbour YC

Weiti Boating Club

Fairhaven Walk Whangaparaoa.
P: (09) 424 5905 W: weiti.co.nz

Gulf Harbour Yacht Club

1299 Laurie Southwick Pde, Gulf Harbour.
P: (09) 424 2118 W: ghyc.co.nz

Notice of Race and Sailing Instructions

1.0 Rules

- 1.1 The regatta will be governed by the 'rules' as defined in *The Racing Rules of Sailing*.
- 1.2 For Keel Yachts the YNZ Safety Regulations Part II, Category 4 shall apply.
- 1.3 For Trailer Yachts the YNZ Safety Regulations Part V, Category A shall apply.
- 1.4 All boats shall carry or tow a dinghy (fully inflated or rigid)
- 1.5 All yachts must be equipped with a VHF radio capable of transmitting and receiving on all channels.
- 1.6 No spinnakers, Code zeros or extras may be set. Extras are defined as sails not normally used to advantage to windward. Headsails may be boomed out using spinnaker booms but shall only be carried on a permanent load bearing forestay with only one headsail per forestay.
- 1.7 RRS 52 will be changed as follows: Autohelms, electric winches are allowed
- 1.8 RRS Appendix T will apply (Arbitration)

2.0 Eligibility & Entry

- 2.1 Entries will be accepted from Keel Yachts and Trailer Yachts registered with YNZ and whose owners/skipper are financial members of a yacht club affiliated to YNZ.
- 2.2 GHYC & WBC reserve the right to accept or refuse any entry.
- 2.3 Entries must be made to either the Gulf Harbour Yacht Club or the Weiti Boating Club using the online entry form on the Club's website, with payment of the designated entry fee. **Entrants must provide a mobile phone number that they can be contacted on while racing.**
- 2.4 Only series entrants will be eligible for series points. Entries for individual races to be received and fees paid by 2000 hrs on the evening preceding a scheduled race day
- 2.5 Late entries for individual races may also be accepted at the discretion of the Race Committee or Race Officer on the day of the scheduled race. Entry fee \$15 per race
Entry Fees: \$80 for series or \$15 per race \$100 for late series entry
- 2.6 Series entries to be received by 1600 hrs on Tuesday 22 October 2019. Late series entries will be accepted up to 1600 hrs Friday 8 November 2019 subject to payment of the late fee. Any races completed prior to both a completed entry form and payment being received will not be eligible for series points and will be scored DNC.
- 2.7 WBC Members: Payment of entry fees by electronic payment to WBC
Bank Acct **03 0419 0006778 00**
Details to be loaded with payment
Particulars = **Boat Name** Code = **Series Name** Ref = **Series or Race#**



Weiti Boating Club (INC)
PO Box 207 Whangaparaoa



3.0 Notices to Competitors

- 3.1 Notices may be posted on one or more of the following:
 - 3.1.1 The Weiti Boating Club Website weiti.co.nz
 - 3.1.2 The Gulf Harbour Yacht Club Website ghyc.co.nz
 - 3.1.3 Advised by Txt to the mobile number given in 2.3 above.
 - 3.1.4 Advised by email to the email address loaded with the online entry form
 - 3.1.5 On the official notice boards located at the GHYC & WBC clubrooms.

4.0 Changes to Sailing Instructions

- 4.1 Any change to the sailing Instructions will be posted at least 2 hours prior to the scheduled start of the day's racing, on the day it will take effect.
- 4.2 Notices of cancellation will endeavor to be sent by email and /or Txt to the email address /mobile number given in 2.3 above, at least 1 hour prior to the scheduled start of the days racing.

5.0 Schedule of Races

Race	Day	Date	Destination	Other	Warning Signal	High tide	
						Time	Ht
Race 1	Sa	26-10-2019	Kawau [2]	Combined 1 (WBC control)	0955	0611	3.1
Race 2	Sa	9-11-2019	TBA	Combined 2 (GH control)	0955	0555	2.7
Race 3	Sa	30-11-2019	Waiheke [9]	Combined 3 (WBC control)	0955	1058	3.4
Race 4	Sa	14-12-2019	Kawau [1]	Combined 4 (GH control)	0955	0947	3.3
Race 5	Fr	24-1-2020	Mahurangi [5]	Combined 5 (WBC control)	1825	2015	3.0
Race 6	Sa	29-2-2020	Islington [6]		0955	1216	3.0
Race 7	Fr	20-3-2020	Kawau [3]	Sandspit race Saturday	1825	1742	2.8
Race 8	Fr	10-4-2020	Waiheke [13]	Combined 6 (GH control)	0955	0859	3.6

6.0 Class Flag

- 6.1 All boats will race in one class and fly a White class flag.

7.0 Racing Area

- 7.1 The races will be held on the waters of the Hauraki Gulf and Waitemata Harbour.

8.0 Race control

- 8.1 The Race Committee shall either provide a start vessel or designate one boat participating in the race as the **Race Start Vessel** and notify all entrants accordingly.
- 8.2 The Race Committee shall designate one boat participating in the race as the **Committee Boat** for the race and notify all entrants accordingly. Race control will move from the Race Start Vessel to the Committee Boat following completion of the start sequence.
- 8.3 A boat that retires from a race shall notify the Committee Boat immediately. Acknowledgement is required from the Committee Boat.
- 8.4 The Race Committee may provide a **Race Finish Vessel**. If so, all entrants will be notified accordingly that the finish procedure will be as per 12.2 below.



Weiti Boating Club (INC)
PO Box 207 Whangaparaoa



9.0 Radio Communications

- 9.1 The race channel to be used is VHF Radio Ch.77. All boats must maintain a constant radio watch on this channel.
- 9.2 For all WBC controlled races, the call sign for the Race Start Vessel and the Committee Boat is "WEITI Race Control".
- 9.3 For all GHYC controlled races, the call sign for the Race Start Vessel and the Committee Boat is "Gulf Harbour Race Control".

10.0 Course to be sailed

- 10.1 The Courses are detailed in Addendum B.
- 10.2 On the evening prior to the race, and not later than 2000 hours, the course and destination may be displayed on the Club Notice Board along with the nominated starting procedure (as in 11.1.1 below)
- 10.3 The course may be changed/ or shortened on the day of the race due to weather conditions at the discretion of the Race Officer. Any changes made ashore will be at least 1 hour prior to the scheduled start of the day's race, and be notified to competitors (as in 3.0 above)
- 10.4 The Committee Boat may also change or shorten the course on the water by advising over VHF Radio Ch 77. Such announcements will be made at 15 and 45 minutes past the hour for the duration of the race. This changes RRS 32.

11.0 The Start

11.1 Start line

11.1.1 For GHYC races:

(Procedure 1) the start line will be between a staff displaying an orange flag on the Race Start Vessel at the starboard end and the South East edge of Kotunui Island at the port end. This is detailed in addendum A.

(Procedure 2) The start line is a transit line between the outer Gulf Harbour Marina RED marker (to Port) and the Southern face of Kotanui Island (Frenchman's Cap) (to Starboard). There will NOT be a start boat and there will NOT be any sound signals. The race will start at 1000 hours (GPS Time) This changes RRS 26.

For GHYC controlled combined races, the start line will be as described in 11.1.1 procedure 1 above.

11.1.2 For WBC controlled races, the start line will be in the vicinity of Arkles Bay.

The starting line will be between a staff displaying an orange flag on the Race Start Vessel at the starboard end and an orange conical buoy at the port end. This is detailed in addendum A.

- 11.2 All races will be started according to RRS 26 with the warning signal for races as per the table in 5.0 above.
- 11.3 A boat that does not start within 10 minutes after her starting signal will be scored DNS (Did Not Start). This changes RRS A4 and A5
- 11.4 No engines shall be used after the preparatory signal for the race is given.
- 11.5 If any boat or part of a boat, or crew, is on the course side of the starting line at the starting signal and is identified, the Race Start Vessel shall attempt to broadcast her number on VHF Radio Ch 77. Failure to make a broadcast or to time it accurately will not be grounds for redress. This changes RRS 62.1 (a). (Redress)



Weiti Boating Club (INC)
PO Box 207 Whangaparaoa



12.0 The Finish

- 12.1 The finishing line will be as described in Addendum B.
- 12.2 If a Race Finish Vessel has been advised as in the SI's (refer 8.4 above) then this will be positioned on the designated finish line and boats shall take this Finish Vessel as follows:
 - 12.2.1 For Courses: 5, 7, 9, 10, 12 and 13 the Finish Vessel shall be left to PORT
 - 12.2.2 For Courses: 1, 2, 3, 6, 8, 11 and 14 the Finish Vessel shall be left to STARBOARD
 - 12.2.3 For Course 4: The Finish Vessel to be positioned outside the Emu Point Yellow and Green Buoys and will not form part of the finish line
- 12.3 In the absence of a Race Finish Vessel being on station, all boats shall record their own finish time in hours, minutes and seconds (preferably using a GPS) and Finishing times are to be sent by Txt to the mobile number nominated by the Controlling Club as soon as practicable after finishing the race
- 12.4 Any boat not having advised its finish time after 60 minutes have elapsed from the last boat finishing shall be recorded DNF (Did Not Finish).

13.0 Time limits

- 13.1 The time limits to be applied for each race format are as below:

Race Format	Time limit for first boat	Time allowed for other boats
Cruising - Up to 20 miles	5 hours	+ 2 hours
Cruising - More than 20 miles	7 hours	+ 2 hours
Cruising – Course 14 Te Kouma	No time limit	No time limit

If no boats finish within the “Time limit for first boat” then the race will be abandoned.

- 13.2 Conditional upon 13.1 above, a boat failing to finish within the “time allowed for other boats” will be scored DNF (Did Not Finish). This changes RRS 35 and A4.1 (*Time Limit and Scores and Low Points and Bonus Points System*)
- 13.3 If a course is shortened, the original time limit remains. If the destination is changed (i.e. a new course number is advised), then the time limit for the new course will apply.
- 13.4 The Committee Boat may change or shorten the course on the water by advising over VHF Radio Ch 77. Such announcements will be made at 15 and 45 minutes past the hour for the duration of the race. This changes RRS 32.

14.0 Protests and requests for Redress

- 14.1 For protests where only a rule of part 2 (When boats Meet) is alleged to have been broken, an arbitration hearing will be offered prior to any hearing.
- 14.2 A protest shall be lodged in the appropriate format (forms are available from the Club House or YNZ Website) within the protest time limit and delivered to a member of the Race / Sailing Committee.
- 14.3 The time limit for lodging a protest is 120 minutes after the last boat has finished

15.0 Handicapping

- 15.1 Handicapping for WBC Cruising series races will be in accordance with the WBC Handicapping system. Handicapping for Combined series races will be in accordance with the GHYC Handicapping system.
- 15.2 Initial handicaps will be agreed between the two clubs. One-off adjustments may be made during the series where required, upon agreement between both clubs.



Weiti Boating Club (INC)
PO Box 207 Whangaparaoa



16.0 Scoring

- 16.1 Five races are required to be completed to constitute a series.
- 16.2 The best seven (7) boat scores will count towards series
- 16.3 RRS Appendix A9 will be used

17.0 Safety Regulations

- 17.1 Skippers are required to maintain a written list on board of all crew for the day (including the skipper), their next-of-kin or contact person, and a contact phone number. All crew must be made aware of the location of this list before departing their marina / mooring.
- 17.2 All entrants are required to register with the Race Start Vessel via VHF Radio Ch 77, before the warning signal advising the boat name and the number of people on board.
- 17.3 All skippers must take responsibility to ensure at all times their boat complies with the relative safety regulations in Sailing Instructions Rule 1.0 above
- 17.4 Boats may be inspected for compliance with the safety regulations at the discretion of the Race Committee

18.0 Prizes

- 18.1 Day prizes will be awarded on the designated beach as soon as practicable after each race.
- 18.2 Series results will be advised as soon as practicable following the completion of Race 8.
- 18.3 Series prizes will be presented during the WBC Summer prize giving.

19.0 Insurance

- 19.1 Each participating boat shall be insured with valid Third-Party insurance – liability insurance with a minimum cover of \$5M per incident or equivalent

20.0 Disclaimer of Liability

- 20.1 Competitors participate in the regatta entirely at their own risk. See RRS 4, Decision to Race. The responsibility for a boat's decision to participate in a race or to continue racing is hers alone.
- 20.2 The Organising Authority will not accept any liability for material damage or personal injury, or death sustained in conjunction with, prior to, during, or after the regatta.

For further details contact the administrative office at either:

Weiti Boating Club

P: 09 424 5905

E: weiti@xtra.co.nz

W: weiti.co.nz

Gulf Harbour Yacht Club

P: 09 424 2118

E: admin@ghyc.co.nz

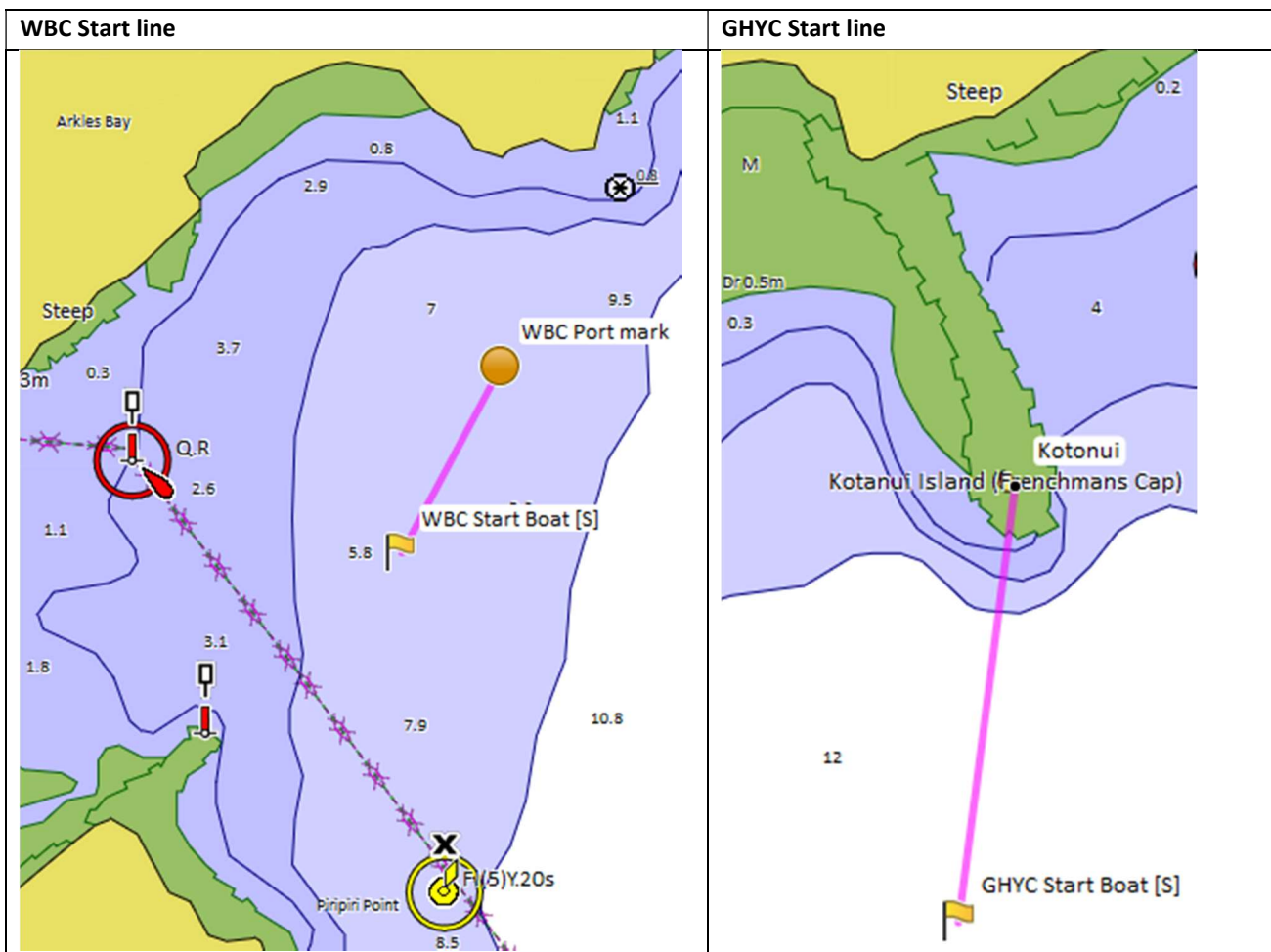
W: ghyc.co.nz



Weiti Boating Club (INC)
PO Box 207 Whangaparaoa



Addendum A: Start lines





Weiti Boating Club (INC)
PO Box 207 Whangaparaoa



Addendum B: Courses & Finish lines

1. Cruising courses: All courses – boats must pass to seaward of Wellington rock

<u>Course</u>	<u>Course destination</u>	<u>Course details</u>	<u>Nms</u>
1	Kawau – Bostaquet Bay	Navy Buoy (P)	14.8
2	Kawau via Motuora – Bon Accord	Navy Buoy (P), Motuora Is. (S), Motuketekete Is (P)	17.2
3	Kawau – Mansion House Bay	Navy Buoy (P), Passage Reef. (P), Beehive Is (P)	14.7
4	Islington Bay via Rakino Channel	Motutapu Is (S)	15.0
5	Mahurangi	Navy Buoy (P), Saddle Island (S)	13.2
6	Islington Bay	Rangitoto(P), Iliomona Rock (P)	13.9
7	Ponui – Shark Bay	Rakino (P), Waiheke (P)	23.8
8	Rakino Island – Woody Bay	Direct	9.6
9	Waiheke – Oneroa	Rakino (P)	14.5
10	Waiheke – Rocky Bay	Rakino (P)	18.9
11	Waiheke – Huruhi Bay	Rakino (P)	15.9
12	Motuihe Island	Rakino (P), Motutapu (S)	13.9
13	Waiheke – Man-O’ War Bay	Rakino (P), Waiheke(S)	26.1
14	Te Kouma	Rangipukea Is (S)	34.2

Note: see Cruising Supplement for detailed finish line coordinates

2. Day courses: to be used in the event that conditions prevent one of the above courses being sailed. The start and finish line for these courses will be advised on the day.

<u>Course</u>	<u>Course details</u>	<u>Nms</u>
15	Start – Navy Buoy (S) – GH Buoy (S) – Finish	7.5
16	Start – Marine-Sth (P) – GH Buoy (P) – Finish	6.5
17	Start – Marine-Nth (P) – Torbay Buoy (P) – GH Buoy (P) – Finish	9.9
18	Start – Marine-Nth (P) – Marine-Sth (P) – GH Buoy (P) – Finish	7.4
19	Start – Marine-Nth (P) – Marine-Sth (P) – Navy Buoy (P) - GH Buoy (S) – Finish	13.4
20	Start – Navy Buoy (S) - Marine-Sth (S) - Marine-Nth (S) – GH Buoy (P) – Finish	13.7