



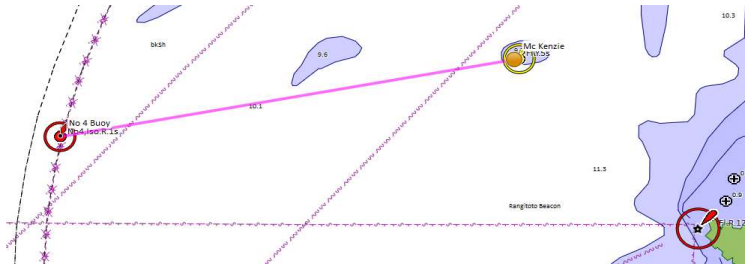
# Amended Cruising Supplement 2020

**Provides detail of cruising destinations and coordinates of finish lines.**

**Finish Vessel on station:** If a Race Finish Vessel has been advised, then this will be positioned on the designated finish line. Boats shall leave this Finish Vessel either to Port or Starboard as described in the course details for each finish line below.

**Alternative finish lines:** The following may be used in the event that a race is shortened for some reason. Notice to entrants of a shortened course will be advised by the Committee boat. Alternative finish lines are:

- a. Navy buoy finish – a line between the two yellow buoys.
- b. McKenzie buoy finish – a line between the yellow McKenzie buoy (S36 46.721 E174 49.115) and the red channel marker No 4 (S36 46.805 E174 48.541). Bearing 59.5o Mag to McKenzie Buoy.

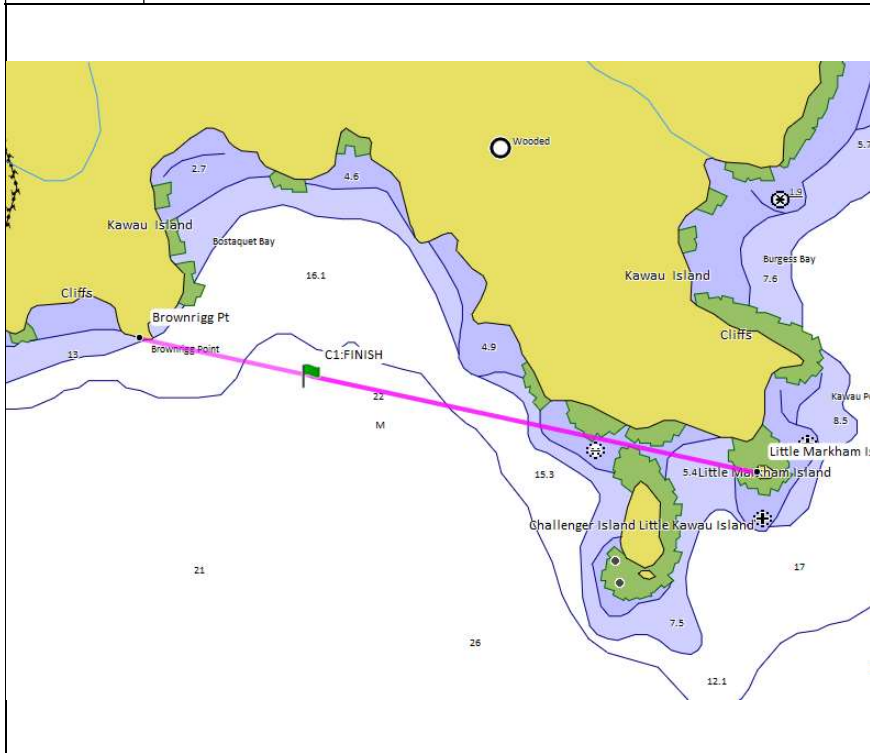


- c. Rakino finish – as per course 8 finish

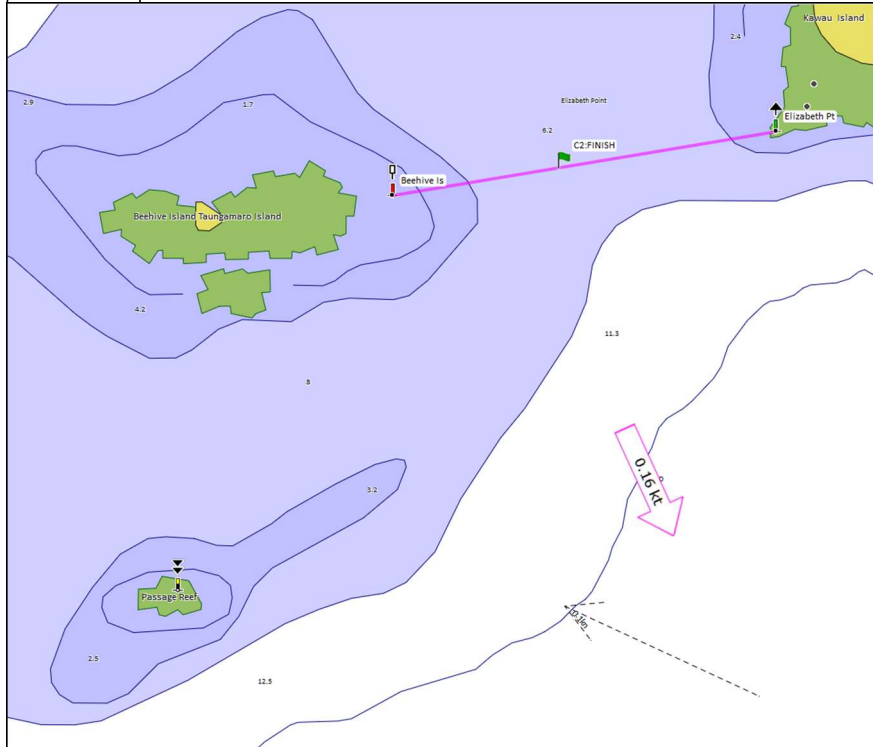
**Day courses:** to be used in the event that conditions prevent one of the above courses being sailed. The start and finish line for these courses will be advised on the day.

<u>Course</u>	<u>Course details</u>	<u>Nms</u>
15	Start – GH Buoy (P) - Navy Buoy (S) – GH Buoy (S) - Finish	9.5
16	Start – GH Buoy (S) - Marine-Sth (P) - GH Buoy (P) - Finish	8.2
17	Start – GH Buoy (S) - Marine-Nth (P) - Torbay Buoy (P) – GH Buoy (P) – Finish	12.0
18	Start – GH Buoy (S) - Marine-Nth (P) - Marine-Sth (P) - GH Buoy (P) - Finish	9.7
19	Start – GH Buoy (S) – Marine-Nth (P) – Marine-Sth (P) – Navy Buoy (P) – GH Buoy (S) – Finish	15.7
20	Start – GH Buoy (P) - Navy Buoy (S) - Marine-Sth (S) - Marine-Nth (S) – GH Buoy (P) – Finish	15.7
21	Start – GH Buoy (S) – Torbay Buoy (S) – Marine Nth (S) – GH Buoy (P) – Finish	15.3

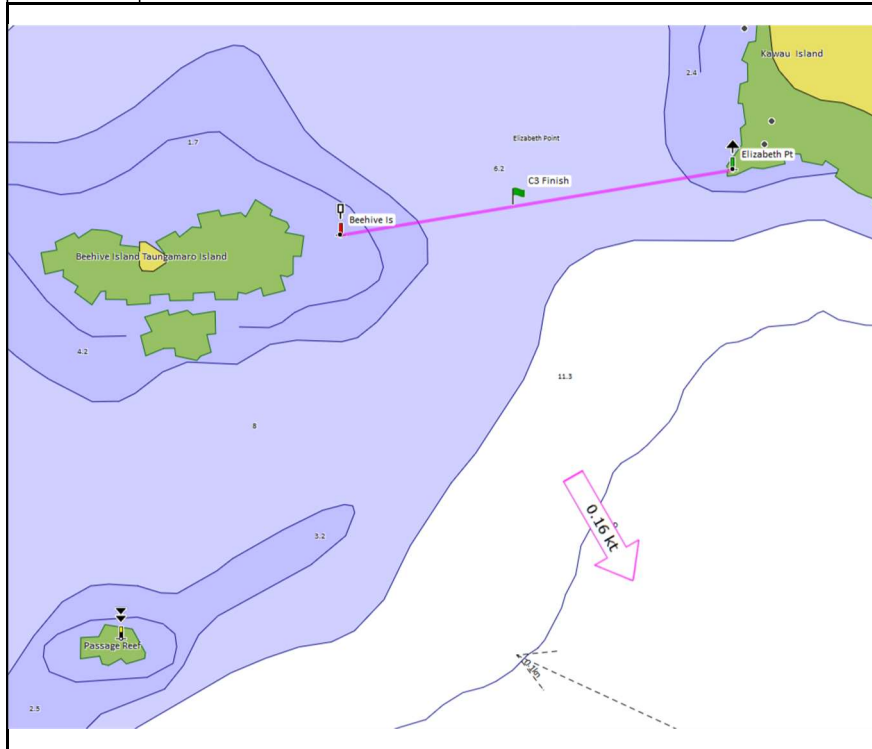
<b>Course 1</b> Kawau – Bostaquet Bay		
Distance	14.8 miles	Time Limit: 5 hours
Course	Navy Buoy [P], Finish 1 (Finish Boat to Starboard if in position)	
BBQ	Bostaquet Bay	
<b>Finish 1:</b> Bostaquet Bay		[Shortened course: Navy Buoy finish]
Transit	Brownrigg Point [P]	36° 26.827 S 174° 51.306 E
	Little Markham Island [S]	36° 27.071 S 174° 52.616 E
Waypoint	36° 26.896 S 174° 51.672 E	
Bearing	263.7° Mag. to Brownrigg Pt	
Chart	NZ 5227	



<b>Course 2</b> Kawau via Motuora - Bon Accord		
Distance	17.2 miles	Time Limit: 5 hours
Course	Navy Buoy [P], Motuora Is. [S], Motuketekete Is [P], Finish 2 (Finish Boat to Starboard if in position)	
BBQ	Mansion House Bay	
<b>Finish 2:</b> Elizabeth Point		[Shortened course: Navy Buoy finish]
Transit	Beehive Is. [P]	S36 27.095 E174 49.486
	Elizabeth Point [S]	S36 27.029 E174 49.949
Waypoint	S36 27.067 E174 49.681	
Bearing	240.6 <sup>0</sup> Mag to Beehive mark	
Chart	NZ5227	

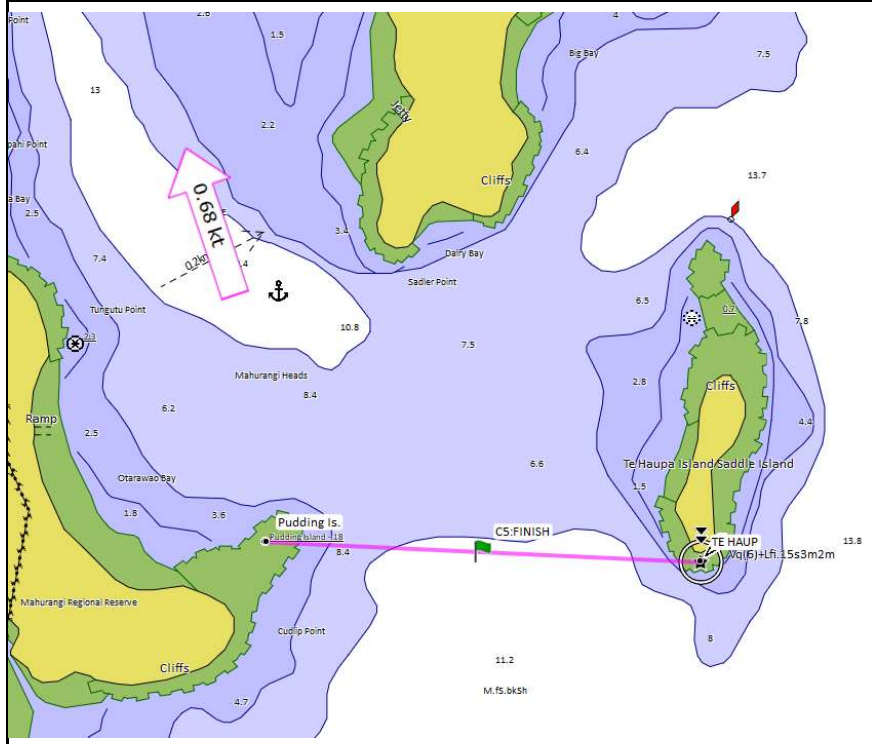


<b>Course 3</b> Kawau – Mansion House Bay		
Distance	14.7 miles	Time Limit: 5 hours
Course	Navy Buoy [P], Passage Reef. [P], Beehive Is [P], Finish 3 (Finish Boat to Starboard if in position)	
BBQ	Mansion House Bay	
<b>Finish 3:</b> Elizabeth Point		[Shortened course: Navy Buoy finish]
Transit	Beehive Is. [P]	S36 27.095 E174 49.486
	Elizabeth Point [S]	S36 27.029 E174 49.949
Waypoint	S36 27.067 E174 49.681	
Bearing	240.6 <sup>0</sup> Mag to Beehive mark	
Chart	NZ5227	

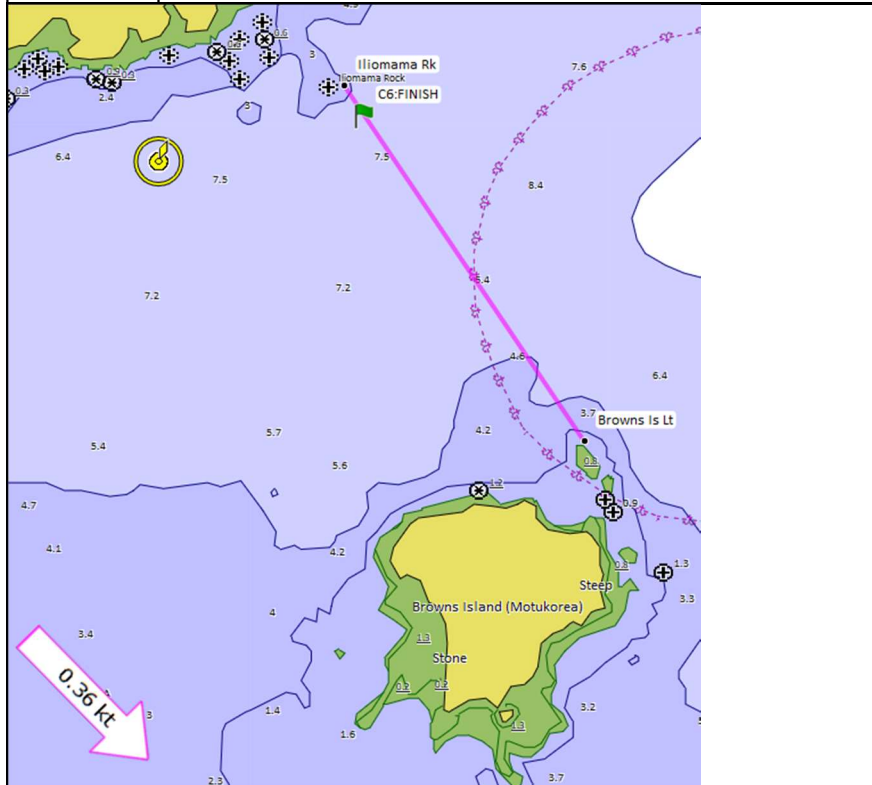


<b>Course 4: Islington Bay via Rakino Channel</b>			
Distance	15 miles	Time Limit: 5 hours	
Course	Motutapu Is [S], Finish 4 (If Finish Vessel is on station will be positioned outside the Emu Point Yellow and Green Buoys and will not form part of the finish line)		
BBQ	Decided on the day		
<b>Finish 4: Islington Nthn</b>		[Shortened course: Rakino finish]	
Transit	Emu Pt Green [P]	36° 48.171 S	174° 55.300 E
	Emu Pt Yellow [S]	36° 48.046 S	174° 55.027 E
Waypoint	36° 48.077 S 174° 55.094 E		
Bearing	280.2° Mag to Emu Pt Yellow		
Chart	NZ5324		

<b>Course 5: Mahurangi</b>			
Distance	13.2 miles	Time Limit: 5 hours	
Course	Navy Buoy [P], Te Haupa Is. (Saddle Is.) [S], Finish 5 (Finish Boat to Port if in position)		
BBQ	Otarawao (Sullivan's) Bay		
<b>Finish 5: Mahurangi</b>		[Shortened course: Navy Buoy finish]	
Transit	pudding Is [P]	36° 30.828 S	174° 43.844 E
	Te Haupa Island Light [S]	36° 30.900 S	174° 44.800 E
Waypoint	36° 30.846 S 174° 44.339 E		
Bearing	73.5° Mag to Te Haupa Is Light		
Chart	NZ5321		



<b>Course 6: Islington Bay via Rangitoto</b>		
Distance	13.9 miles	Time Limit: 5 hours
Course	Rangitoto [P], Iliomona Rock [P], Finish 6 (Finish Boat to Starboard if in position)	
BBQ	Decided on the day	
<b>Finish 6: Islington</b>	[Shortened course: McKenzie finish]	
Transit	Iliomama Rk [P]	36° 48.501 S    174° 53.192 E
	Browns Is Lt [S]	36° 49.436 S    174° 53.928 E
Waypoint	36° 48.581 S 174° 53.252 E	
Bearing	308.2° Mag to Iliomama Light	
Chart	NZ5324	

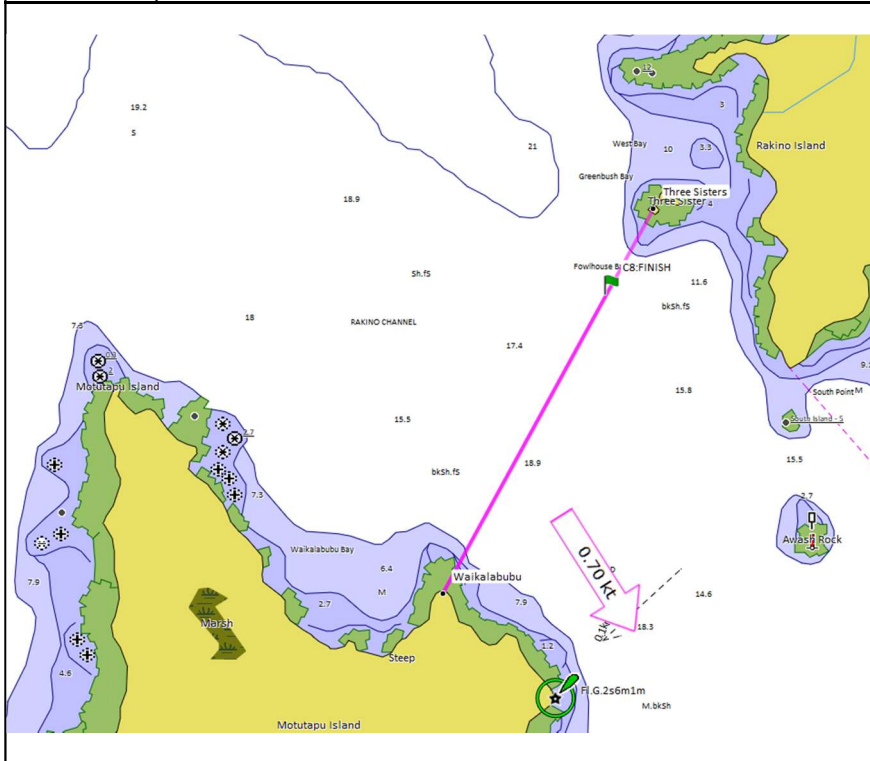


<b>Course 7: Ponui – Shark Bay</b>			
Distance	23.8 miles	Time Limit: 7 7 hours	
Course	Rakino [P], Waikeke [P], Finish 7 (Finish Boat to Port if in position)		
BBQ	Shark Bay or alternate. TBD		
<b>Finish 7: Shark Bay</b>		[Shortened course: Rakino finish]	
Transit	Sunday Rock [S]	36° 50.874 S	175° 09.208 E
	Orapiu Bay Wharf [P]	36° 50.692 S	175° 08.969 E
Waypoint	36° 50.765 S 175° 09.065 E		
Bearing	114.1° Mag to Sunday Rock		
Chart	NZ5324		



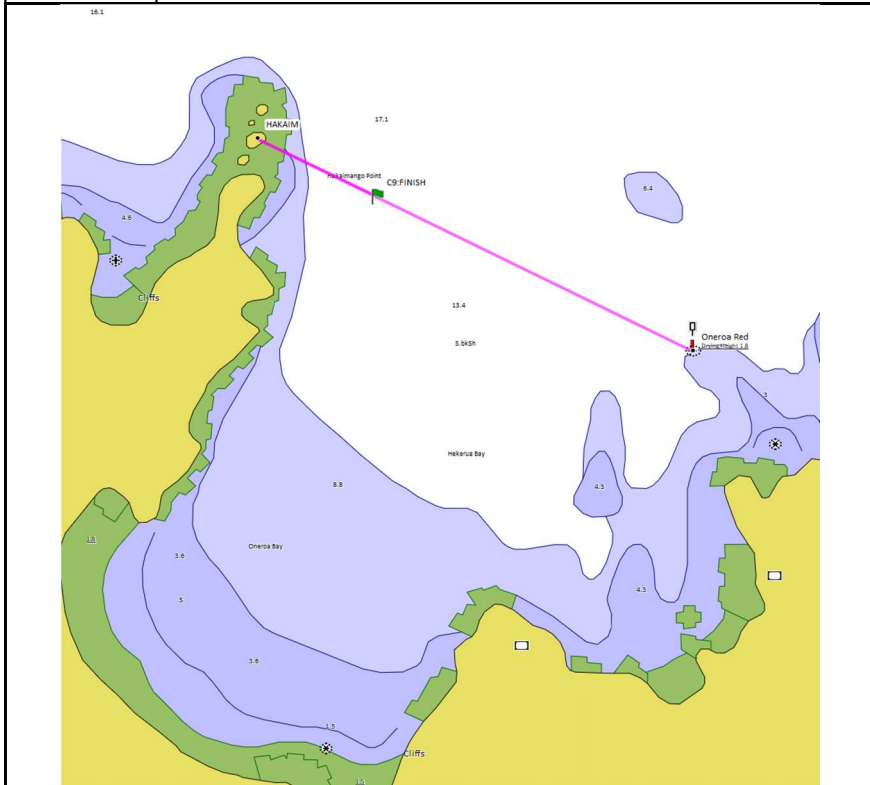
**Course 8: Rakino Island – Woody Bay**

Distance	9.8 miles	Time Limit: 5 hours
Course	Direct, Finish 8 (Finish Boat to Starboard if in position)	
BBQ	Woody Bay or alternative	
<b>Finish 8: Rakino</b>	<b>[No alternate finish ]</b>	
Transit	Waikalabubu [S]	36° 44.240 S    174° 55.768 E
	Three Sisters [P]	36° 43.396 S    174° 56.308 E
Waypoint	36° 43.561 S 174° 56.202 E	
Bearing	7.7° Mag to Three Sisters	
Chart	NZ5324	

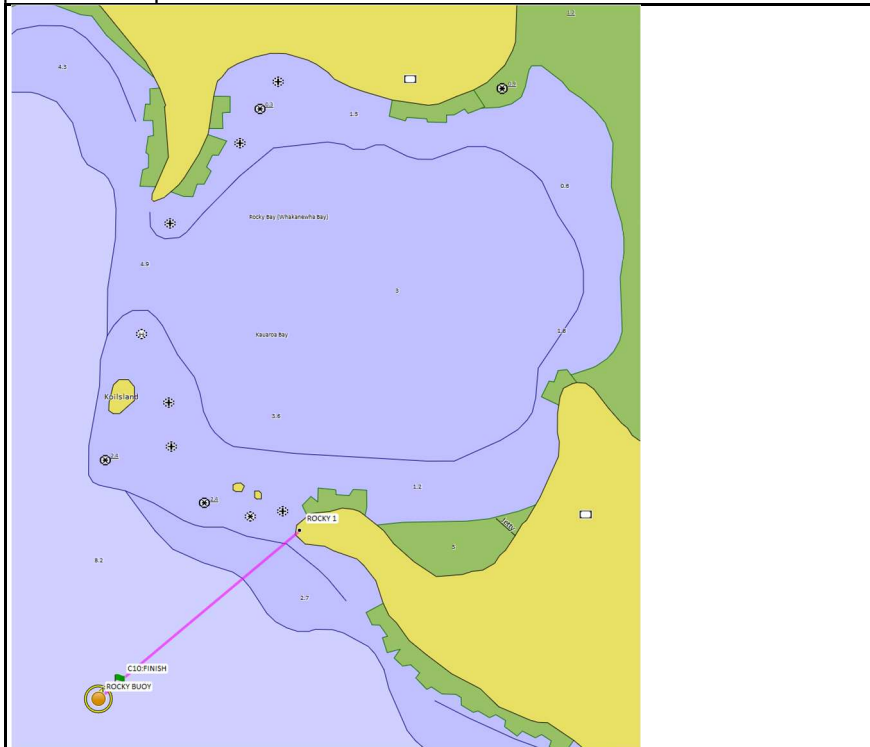


**Course 9: Waiheke – Oneroa**

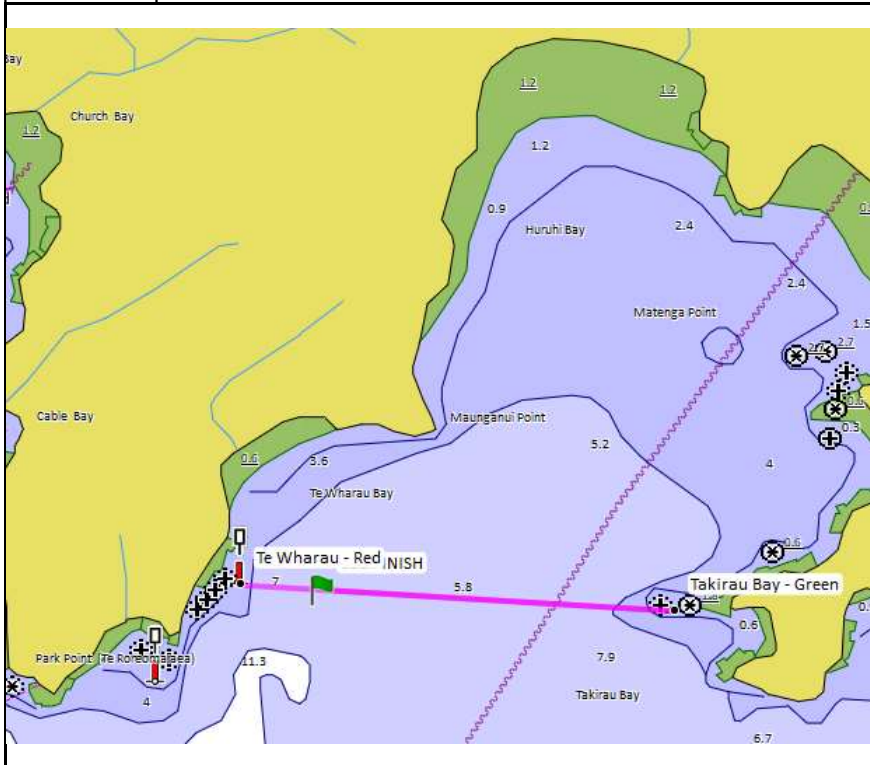
Distance	14.5 miles	Time Limit: 5 hours	
Course	Rakino [P], Finish 9 (Finish Boat to Port if in position)		
BBQ	Oneroa / Little Oneroa Beach		
<b>Finish 9: Oneroa</b>	[Shortened course: Rakino finish]		
Transit	Hakaimango Point [S]	36° 46.066 S	175° 00.860 E
	Port Beacon (Red) [P]	36° 46.372 S	175° 01.611 E
Waypoint	36° 46.077 S 175° 00.882E		
Bearing	98.1° Mag to Port mark		
Chart	NZ5324		



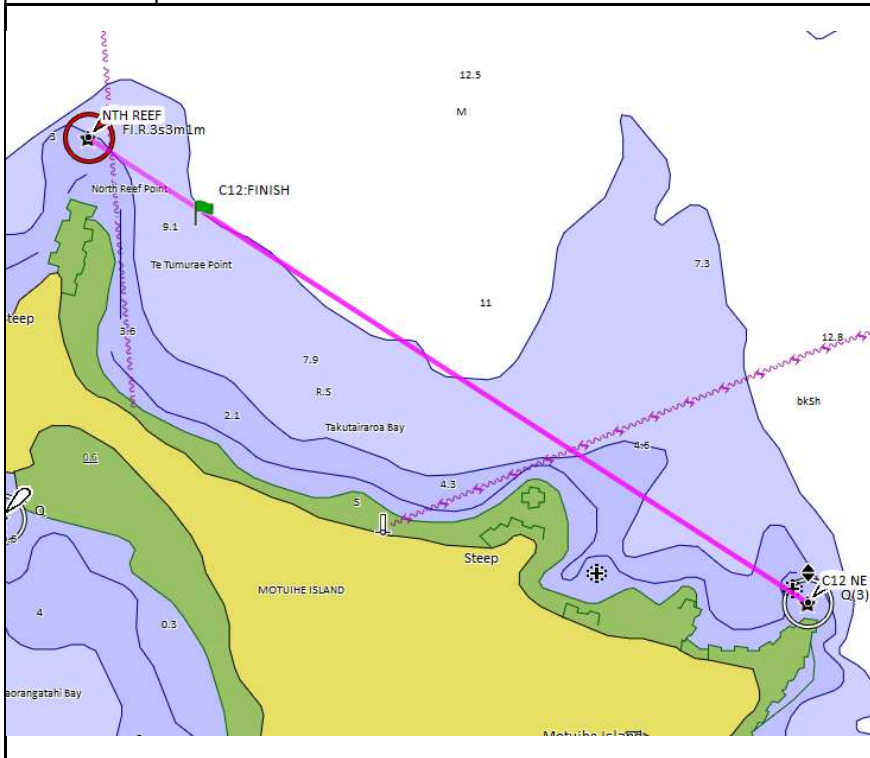
<b>Course 10: Waiheke – Rocky Bay</b>			
Distance	18.9 miles	Time Limit: 5 hours	
Course	Rakino [P], Finish 10 (Finish Boat to Port if in position)		
BBQ	To be advised		
<b>Finish 10: Rocky Bay</b>		[Shortened course: Rakino finish]	
Transit	Kauraroa Bay Headland [P]	36° 49.770 S	175° 03.592 E
	Rocky Bay Buoy [S]	36° 49.980 S	175° 03.300 E
Waypoint	36° 49.957 S 175° 03.327 E		
Bearing	208.8 <sup>0</sup> Mag to Rocky Buoy		
Chart	NZ5324		



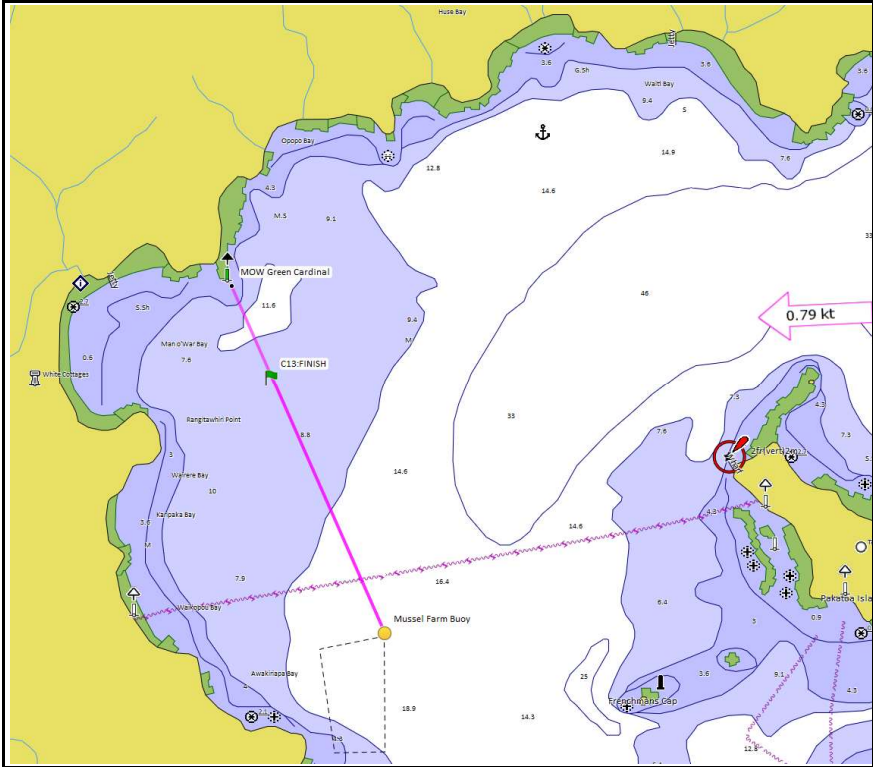
<b>Course 11: Waiheke – Putiki Bay (Huruhi Bay)</b>		
Distance	16.3 miles	Time Limit: 5 hours
Course	Rakino [P], Finish 11 (Finish Boat to Starboard if in position)	
BBQ	Te Wharau Bay	
<b>Finish 11:</b>	Huruhi Bay	[Shortened course: Rakino finish]
Transit	Te Wharau – Red [P]	36° 48.533 S    174° 59.852 E
	Takirau Bay – Green [S]	36° 48.589 S    175° 00.937 E
Waypoint	36° 48.543 S 175° 00.059 E	
Bearing	254.1° Mag to Te Wharau - Red	
Chart	NZ5324	



<b>Course 12: Motuihe Is</b>			
Distance	13.9 miles	Time Limit: 5 hours	
Course	Rakino [P], Motutapu Is. [S], Finish 12 (Finish Boat to Port if in position)		
BBQ	Motuihe Island		
<b>Finish 12: Motuihe</b>		[Shortened course: Rakino finish]	
Transit	Motuihe NE Point [P]	36° 48.527 S	174°57.658 E
	North Reef Light Fl.R.3s [S]	36° 47.700 S	174°56.200 E
Waypoint	36° 47.871 S 174° 56.473 E		
Bearing	285.1° Mag to Nth Reef mark		
Chart	NZ5324		



<b>Course 13: Waiheke - Man o War Bay</b>			
Distance	26.1 miles	Time Limit: 7 hours	
Course	Rakino Is. [P], Waiheke Is. [S], Finish 13 (Finish Boat to Port if in position)		
BBQ	Man o War Bay		
<b>Finish 13:</b>	Man O War	[Shortened course: Rakino finish]	
Transit	MOW Green Cardinal [S]	036°47.115 S	175°09.819 E
	Mussel Farm Buoy [P]	036°48.028 S	175°10.290 E
Waypoint	36° 47.356 S 175° 09.943 E		
Bearing	318.0° Mag to MOW Green Cardinal		
Chart	NZ5324		



<b>Course 14: Te Kouma</b>			
Distance	34.6 miles	Time Limit: none	
Course	Start, Rangipukea Is (S), Finish 14. (Finish Boat to Starboard if in position)		
BBQ	To be advised		
<b>Finish 14: Te Kouma</b>		[Shortened course: Rakino finish]	
Transit	Te Kouma Light [P]	036°49.459 S	175°25.406 E
	Rangipukea Is (East end) [S]	036°49.501 S	175°24.824 E
Waypoint	036°49.483 S 175°25.080 E		
Bearing	65.3 <sup>o</sup> Mag to Te Kouma Light		
Chart	NZ5324		