



Weiti Boating Club



THE JOURNEY STARTS HERE



GHYC Summer Cruising Series 2024-25

Organising Authority Gulf Harbour YC

Combined races in conjunction with Weiti BC

Weiti Boating Club

Fairhaven Walk Whangaparaoa.
P: (09) 424 5905 W: weiti.co.nz

Gulf Harbour Yacht Club

1299 Laurie Southwick Pde, Gulf Harbour.
P: (09) 424 2118 W: ghyc.co.nz

Notice of Race and Sailing Instructions

1.0 Rules

- 1.1 The series will be governed by the 'rules' as defined in *The Racing Rules of Sailing*
- 1.2 For Keel Yachts the YNZ Safety Regulations Part II, Category 4 shall apply.
- 1.3 For Trailer Yachts the YNZ Safety Regulations Part V, Category A shall apply.
- 1.4 All boats shall carry or tow a dinghy (fully inflated or rigid)
- 1.5 All yachts must be equipped with a VHF radio capable of transmitting and receiving on all channels. **A listening watch must be maintained in the Cockpit on VHF Ch77** while underway either with a Handheld or Cockpit fitted VHF radio.
- 1.6 No spinnakers, Code zeros or extras may be set. Extras are defined as sails not normally used to advantage to windward. Headsails may be boomed out using spinnaker booms but shall only be carried on a permanent load bearing forestay with only one headsail per forestay.
- 1.7 For **Skippers sailing single handed** - see additional safety requirements in 16.6 below.
- 1.8 RRS 52 will be changed as follows: Autohelms, electric winches are allowed
- 1.9 RRS Appendix T will apply (Arbitration)

2.0 Eligibility & Entry

- 2.1 Entries will be accepted from Keel Yachts and Trailer Yachts registered with YNZ and whose owners/skippers are financial members of a yacht club affiliated to YNZ.
- 2.2 GHYC & WBC reserve the right to accept or refuse any entry.
- 2.3 Entries must be made to either the Gulf Harbour Yacht Club or the Weiti Boating Club using the online entry form on the Club's website, with payment of the designated entry fee. **Entrants must provide a mobile phone number that they can be contacted on while racing.**
- 2.4 Only series entrants will be eligible for series points. Entries for individual races must be received and fees paid by 2000 hrs on the evening preceding a scheduled race day.
- 2.5 Late entries for individual races may also be accepted at the discretion of the Race Committee or Race Officer on the day of the scheduled race.
Entry Fees: **\$100** for series or \$20 per race
- 2.6 **Series entries to be received by 1600 hrs on Wednesday 23 Oct 2024 (minimum 4 series entries required to run the series)**
- 2.7 **WBC Members: Payment of entry fees by electronic payment through HelloClub or bank transfer to Bank Acct 03 0419 0006778 00.**

Details to be loaded with payment:-

Particulars = **Boat Name**

Code = **Summer Cruising**

Ref = **Series or Race #**



Weiti Boating Club



THE JOURNEY STARTS HERE



3.0 Notices to Competitors

- 3.1 Notices may be posted on one or more of the following:
 - 3.1.1 The Weiti Boating Club Website weiti.co.nz
 - 3.1.2 The Gulf Harbour Yacht Club Website ghyc.co.nz
 - 3.1.3 Advised via WhatsApp to the GHYC Summer Cruising WhatsApp Group

4.0 Changes to Sailing Instructions

- 4.1 Any change to the sailing Instructions will be posted at least 2 hours prior to the scheduled start of the day’s racing, on the day it will take effect.
- 4.2 Notices of cancellation will be sent by WhatsApp at least 1 hour prior to the scheduled start of the day’s racing.

5.0 Schedule of Races

Race	Day	Date	Tentative Destination	Combined races	Control	Start Time
1	Saturday	26 Oct 2024	Kawau - Euphoria Cup (GH Boats)		GHYC	10:00
2	Saturday	16 Nov 2024			GHYC	10:00
3	Saturday	30 Nov 2024			GHYC	10:00
4	Saturday	14 Dec 2024		Combined (1)	GHYC	10:00
5	Friday	24 Jan 2025	Evening Race to Mahurangi		GHYC	17:30
	Saturday	25 Jan 2025	Mahurangi Regatta		MYC	tba
6	Saturday	15 Feb 2025			GHYC	10:00
7	Saturday	15 Mar 2025		Combined (2)	WBC	10:00
8	Saturday	29 Mar 2025			GHYC	10:00
	Saturday	05 April 2025	Sandspit Interclub GHYC/SYC/WBC	In Kawau Bay	SYC	13:00
9	Sunday	06 April 2025	Kawau to GHM Pursuit. Cruising Cup		GHYC	Last Boat 12:00
10	Friday	18 Apr 2025		Combined (3)	GHYC	10:00

6.0 Class Flag

- 6.1 All boats will race in one class and fly a White class flag.

7.0 Racing Area

- 7.1 The races will be held on the waters of the Hauraki Gulf and Waitemata Harbour.

8.0 Race control

- 8.1 The Race Committee shall either provide a start vessel or designate one boat participating in the race as the **Race Start Vessel** and notify all entrants accordingly.
- 8.2 The Race Committee shall designate one boat participating in the race as the **Committee Boat** for the race and notify all entrants accordingly. Race control will move from the **Race Start Vessel** to the **Committee Boat** following completion of the start sequence.



Weiti Boating Club



THE JOURNEY STARTS HERE



- 8.3 The Race Committee may provide a **Race Finish Vessel**. If so, all entrants will be notified accordingly that the finish procedure will be as per 11.2 below.

9.0 Course to be sailed

- 9.1 The Courses are detailed in Addendum B.
- 9.2 On the evening prior to the race, and not later than 2000 hours, the course and destination will be advised by WhatsApp along with the nominated starting procedure (as in 10.1 below)
- 9.3 The course may be changed/ or shortened on the day of the race due to weather conditions at the discretion of the Race Officer. Any changes made ashore will be at least 1 hour prior to the scheduled start of the day's race, and be notified to competitors by WhatsApp.
- 9.4 The **Committee Boat** may also change or shorten the course on the water by advising over VHF Radio Ch 77. Such announcements will be made at 15 and 45 minutes past the hour for the duration of the race. This changes *RRS 32*.

10.0 The Start

10.1 Start line

10.1.1 For GHYC races:

The start line will be between a staff displaying an orange flag on the Race Start Vessel at the starboard end of the line and the South East edge of Kotunui Island at the port end. This is detailed in Addendum A.

GHYC controlled combined races; start line will be as described in 10.1.1 above.

10.1.2 WBC controlled combined races;

the start line will be in the vicinity of Arkles Bay. The starting line will be between a staff displaying an orange flag on the Race Start Vessel at the starboard end and an orange conical buoy at the port end. This is detailed in addendum A.

- 10.2 **GHYC and WBC Races** will be started according to *RRS 26* at times shown in Para 5.0.
- 10.3 A boat that does not start within 10 minutes after her starting signal will be scored DNS (Did Not Start) without a hearing. This changes *RRS A4 and A5*. *Note: Boats that do not come to the start line will be scored as DNC.*
- 10.4 In addition to the provisions of *RRS 29*, if any boat(s) is identified "on course side" at the starting signal, the race committee shall attempt to broadcast her sail number or name on VHF Radio Ch 77. This does not absolve competitors of their responsibility to respond to the flag signals of the Race Committee Vessel. Failure to make a broadcast or to time it accurately will not be grounds for redress. This changes *RRS 62.1 (a)*. (*Redress*)

11.0 The Finish

- 11.1 The finishing line will be as described in Addendum B.
- 11.2 If a Race Finish Vessel has been advised in the SI's (refer 8.3 above) then this will be positioned on the designated finish line and boats shall take this Finish Vessel as follows:
- 11.2.1 For Courses: 5, 7, 9, 10, 12 and 13 the Finish Vessel shall be left to **PORT**
- 11.2.2 For Courses: 1, 2, 3, 6, 8, 11 and 14 the Finish Vessel shall be left to **STARBOARD**
- 11.2.3 For Course 4: The Finish Vessel to be positioned outside the Emu Point Yellow and Green Buoys and will not form part of the finish line
- 11.3 In the absence of a Race Finish Vessel being on station, all boats shall record their own finish time in hours, minutes **and seconds** (preferably using a GPS) and finishing times are to be sent via



Weiti Boating Club



THE JOURNEY STARTS HERE



WhatsApp to the mobile number nominated by the Controlling Club as soon as practicable after finishing the race

- 11.4 Finish times should advise seconds otherwise will be scored as 59 seconds.
- 11.5 Any boat not having advised its finish time after 60 minutes have elapsed from the last boat finishing shall be recorded DNF (Did Not Finish).

12.0 Time limits

12.1 The time limits to be applied for each race format are as below:

Race Format	Time limit for first boat	Finishing Window for other boats
Cruising - Up to 20 miles	5 hours	+ 2 hours
Cruising - More than 20 miles	7 hours	+ 2 hours
Cruising – Course 14 Te Kouma	No time limit	No time limit

- 12.2 If no boats finish within the “Time limit for first boat” then the race will be abandoned.
- 12.3 The finishing window is the time for boats to finish after the first boat starts, sails the course and finishes. Boats failing to finish within the Finishing window, and not subsequently retiring, penalized or given redress, will be scored Time Limit Expired (TLE) without a hearing. A boat scored TLE shall be scored points for the finishing place one more that the points scored by the last boat that finished within the Finishing Window. This changes Racing Rules of Sailing 35, A5.1, A5.2 and A10.
- 12.4 Failure to meet the Target Time will not be grounds for redress. This changes 62.1(a).
- 12.5 If a course is shortened, the original time limit remains. If the destination is changed (i.e. a new course number is advised), then the time limit for the new course will apply.
- 12.6 The Committee Boat may change or shorten the course on the water by advising over VHF Radio Ch 77. Such announcements will be made at 15 and 45 minutes past the hour for the duration of the race. This changes *RRS 32*. Failure to receive this information shall not be grounds for Redress. This changes *RRS62.1(a)*

13.0 Protests and requests for Redress

- 13.1 For protests where only a rule of part 2 (When boats Meet) is alleged to have been broken, an arbitration hearing will be offered prior to any hearing.
- 13.2 Any boat wishing to lodge a protest must notify the race committee boat within 60 minutes of last boat finishing and is to have protest lodged at GHYC/WBC clubrooms by 1800 hours on the Monday following the race.

14.0 Handicapping

- 14.1 Handicapping for GHYC only races will be in accordance with the GHYC Handicapping system.
- 14.2 Initial handicaps will be agreed between the two clubs.

15.0 Scoring

- 15.1 Five races are required to be completed to constitute a series.
- 15.2 The best seven (7) boat scores will count towards series
- 15.3 See also Para 12.3



Weiti Boating Club



THE JOURNEY STARTS HERE



16.0 Safety Regulations

- 16.1 **A boat that retires from a race shall notify the Race Committee either via VHF Ch.77, Phone or Txt (acknowledgement is required) or in person, as soon as practicable after they have retired. They shall also inform other competitors on VHF Ch 77**
- 16.2 All entrants are required to register with the committee boat via VHF Radio Ch 77, before the warning signal advising the boat name and the number of people on board.
- 16.3 Boats may be inspected for compliance with the safety regulations at the discretion of the race committee
- 16.4 **Skippers are required to maintain a written list on board of all crew for the day (including the skipper), their next-of-kin or contact person, and a contact phone number.** All crew must be made aware of the location of this list before departing their marina/mooring.
- 16.5 The Organising Authority **recommends that ALL competitors wear a Personal Floatation Device (Lifejacket)** that meet New Zealand Standard 5823:2005 (inflatable type 401 150N) with a crotch strap while underway.
- 16.6 For any yachts sailing **Single Handed** the following additional safety regulations apply:
 - 16.6.1 Skippers must wear an approved lifejacket whilst racing.
 - 16.6.2 Skippers must carry on their person a means of communication to self-initiate a means of rescue if they fall overboard.

17.0 Radio Communications

- 17.1 All radio communication will be on **VHF Radio Ch.77**
- 17.2 Failure to receive a radio message from the Race Committee will not be grounds for redress. This changes *RRS 62.1(a)*
- 17.3 The call sign for the Race Committee Vessel is

GHYC controlled races	<i>“Gulf Harbour Race Control”</i>
WBC controlled races	<i>“Weiti Race Control”</i>

18.0 Prizes

- 18.1 Day prizes may be awarded on the designated beach as soon as practicable after each race.
- 18.2 Series results will be advised as soon as practicable following the completion of Race 10.
- 18.3 Series prizes may be presented during the GHYC prize giving.
- 18.4 The number of prizes awarded may be dependent on the number of boats participating

1 – 3 boats	1 st prize
4 – 6 boats	1 st and 2 nd prize
7 plus boats	1 st , 2 nd and 3 rd prize

19.0 Insurance

- 19.1 Each participating boat shall be insured with valid Third-Party insurance – liability insurance with a minimum cover of \$5M per incident or equivalent

20.0 Disclaimer of Liability

- 20.1 Competitors participate in this series entirely at their own risk. See RRS rule 4, Decision to Race. The responsibility for a boat’s decision to participate in a race or to continue racing is hers alone.



Weiti Boating Club



THE JOURNEY STARTS HERE



- 20.2 The Organising Authority and/or any sponsor associated with this series shall not be responsible for the seaworthiness of a boat whose entry is accepted and/or the sufficiency and/or adequacy of its equipment or the competence of its skipper and crew.
- 20.3 The Organising Authority will not accept any liability for material damage or personal injury, or death sustained in conjunction with, before, during, or after this series.

For further details contact the administrative office at either:

Weiti Boating Club

P: 09 424 5905

E: weiti@xtra.co.nz

W: weiti.co.nz

Gulf Harbour Yacht Club

P: 09 424 2118

E: admin@ghyc.co.nz

W: ghyc.co.nz



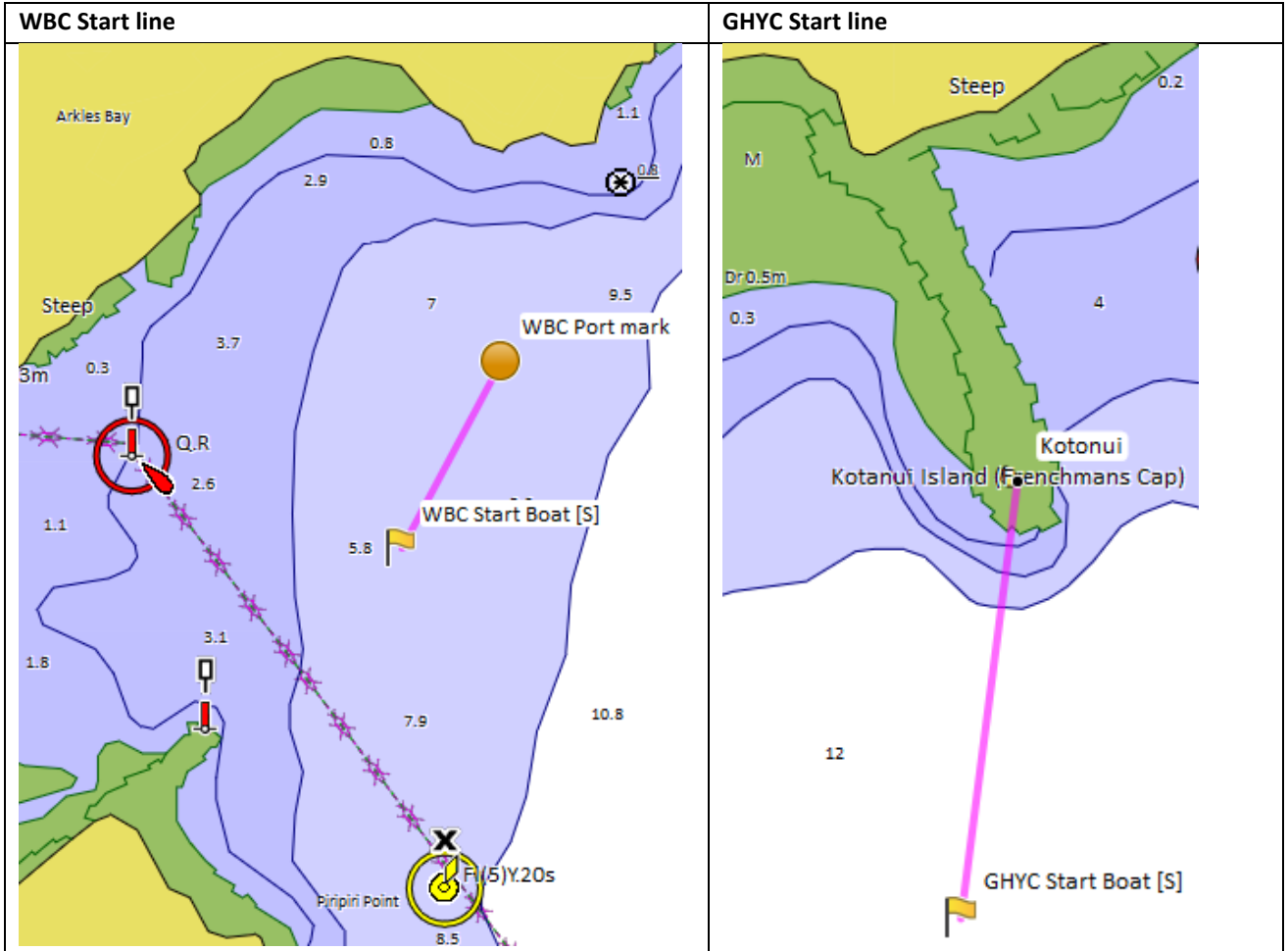
Weiti Boating Club



THE JOURNEY STARTS HERE



Addendum A: Start lines





Weiti Boating Club



THE JOURNEY STARTS HERE



Addendum B: Courses & Finish lines

1. Cruising courses: All courses – boats must pass to seaward of Wellington rock

<u>Course</u>	<u>Course destination</u>	<u>Course details</u>	<u>Nms</u>
1	Kawau – Bostaquet Bay	Navy Buoy (P)	14.8
2	Kawau via Motuora – Bon Accord	Navy Buoy (P), Motuora Is. (S), Motuketekete Is (P)	17.2
3	Kawau – Mansion House Bay	Navy Buoy (P), Passage Reef. (P), Beehive Is (P)	14.7
4	Islington Bay via Rakino Channel	Motutapu Is (S)	15.0
5	Mahurangi	Navy Buoy (P), Saddle Island (S)	13.2
6	Islington Bay	Rangitoto(P), Iliomona Rock (P)	13.9
7	Ponui – Shark Bay	Rakino (P), Waiheke (P)	23.8
8	Rakino Island – Woody Bay	Direct	9.6
9	Waiheke – Oneroa	Rakino (P)	14.5
10	Waiheke – Rocky Bay	Rakino (P)	18.9
11	Waiheke – Huruhi Bay	Haystack (S), Rakino (S)	17.1
12	Motuihe Island	Haystack (S), Rakino (S)	15.5
13	Waiheke – Man-O’ War Bay	Rakino (P), Waiheke(S)	26.1
14	Te Kouma	Rangipukea Is (S)	34.2
15	Rakino Island	Torbay Buoy (P), Finish as per Course 8.	11.9
16	Kawau Island – BonAccord	Navy Buoy (P), Motoroa Is (S), Rabbit Is (S) Finish will be a transit between Momona Point and Martello Rock.	18.4

Note: refer 4 Below for detailed finish line coordinates

2. Day courses: to be used in the event that conditions prevent one of the above courses being sailed. The start and finish line for these courses will be advised on the day.

<u>Course</u>	<u>Course details</u>	<u>Nm</u>
17	Start – GH Buoy (P) - Navy Buoy (S) – GH Buoy (S) – Finish	9.5
18	Start – GH Buoy (S) - Marine-Sth (P) – GH Buoy (P) – Finish	8.2
19	Start – GH Buoy (S) - Marine-Nth (P) – Torbay Buoy (P) – GH Buoy (P) – Finish	12.0
20	Start – GH Buoy (S) - Marine-Nth (P) – Marine-Sth (P) – GH Buoy (P) – Finish	9.7
21	Start – GH Buoy (S) - Marine-Nth (P) – Marine-Sth (P) – Navy Buoy (P) - GH Buoy (S) – Finish	15.7
22	Start – GH Buoy (P) - Navy Buoy (S) - Marine-Sth (S) - Marine-Nth (S) – GH Buoy (P) – Finish	15.7
23	Start – GH Buoy (S) – Torbay Buoy (S) – Marine Nth (S) – GH Buoy (P) - Finish	15.3

3. Mark locations



Weiti Boating Club



THE JOURNEY STARTS HERE

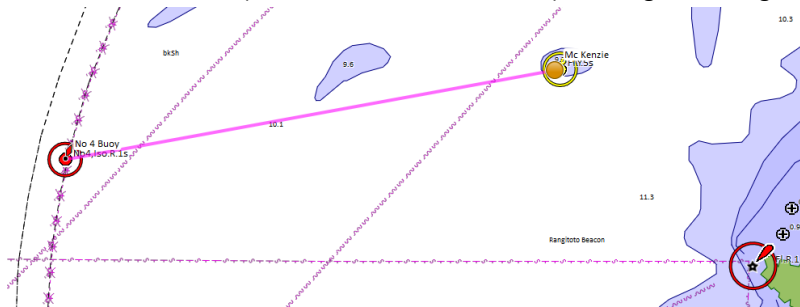


Mark locations are as per table below:

Mark	Lat.	Long.	Notes
GH Buoy (Gulf Harbour Yellow Buoy)	36° 39.130' S	174° 48.030' E	
McKenzie Buoy	36° 46.721' S	174° 49.115' E	
East Cardinal Buoy (approx. 1 mile east of Tiritiri)	36° 36.497' S	174° 55.340' E	
Torbay Buoy (approx. 1.5 miles east of Torbay)	36° 42.500' S	174° 47.300' E	
Navy Buoy (Whangaparaoa Outermost / Eastern buoy)	36° 36.922' S	174° 50.654' E	
Haystack (Orarapa Island)	36° 41.891' S	174° 57.266' E	
Marine-Nth (Northern Long Bay Marine Reserve marker) Piripiri Point	36° 39.761' S	174° 45.282' E	
Marine-Mid (Middle Long Bay Marine Reserve marker)	36° 40.451' S	174° 45.900' E	
Marine-Sth (Southern Long Bay Marine Reserve marker)	36° 41.122' S	174° 46.488' E	
Rabbit Island	36° 24.601' S	174° 47.309' E	

4. Alternative finish lines: The following may be used in the event that a race is shortened for some reason. Notice to entrants of a shortened course will be as advised in the sailing instructions.

- a. Navy buoy finish – a line between the two yellow buoys.
- b. McKenzie buoy finish – a line between the yellow McKenzie buoy (36° 46.721' S 174° 49.115' E) and the red channel marker No 4 (36° 46.805' S 174° 48.541' E). Bearing 59.5° Mag to McKenzie Buoy.



- c. Rakino finish – as per course 8 finish

5. Finish lines: detailed finish line coordinates are given below:



Weiti Boating Club



THE JOURNEY STARTS HERE



Course 1 Kawau – Bostaquet Bay		
Distance	14.8 miles	Time Limit: 5 hours
Course	Navy Buoy [P], Finish 1 (Finish Boat to Starboard if in position)	
BBQ	Bostaquet Bay	
Finish 1: Bostaquet Bay		[Shortened course: Navy Buoy finish]
Transit	Brownrigg Point	36° 26.827' S 174° 51.306' E
	Little Markham Island	36° 27.071' S 174° 52.616' E
Waypoint	36° 26.896' S 174° 51.672' E	
Bearing	263.7° Mag. to Brownrigg Pt	
Chart	NZ 5227	





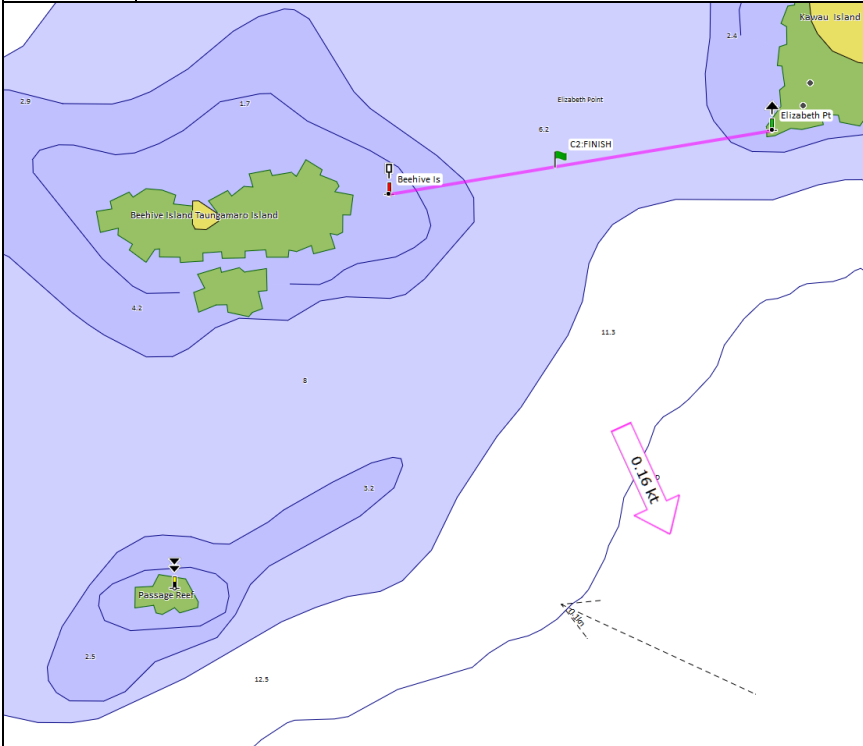
Weiti Boating Club



THE JOURNEY STARTS HERE



Course 2 Kawau via Motuora - Bon Accord		
Distance	17.2 miles	Time Limit: 5 hours
Course	Navy Buoy [P], Motuora Is. [S], Motuketekete Is [P], Finish 2 (Finish Boat to Starboard if in position)	
BBQ	Mansion House Bay	
Finish 2: Elizabeth Point		[Shortened course: Navy Buoy finish]
Transit	Beehive Is.	36° 27.095' S 174° 49.486' E
	Elizabeth Point	36° 27.029' S 174° 49.949' E
Waypoint	36° 27.067' S 174° 49.681' E	
Bearing	240.6° Mag to Beehive mark	
Chart	NZ5227	





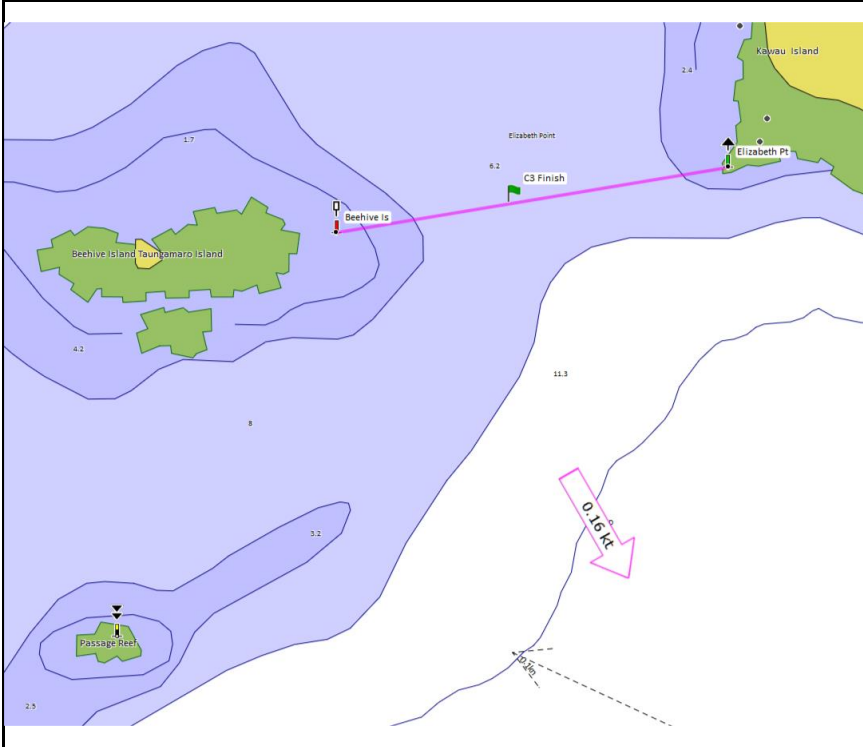
Weiti Boating Club



THE JOURNEY STARTS HERE



Course 3 Kawau – Mansion House Bay		
Distance	14.7 miles	Time Limit: 5 hours
Course	Navy Buoy [P], Passage Reef. [P], Beehive Is [P], Finish 3 (Finish Boat to Starboard if in position)	
BBQ	Mansion House Bay	
Finish 3: Elizabeth Point	[Shortened course: Navy Buoy finish]	
Transit	Beehive Is.	36° 27.095' S 174° 49.486' E
	Elizabeth Point	36° 27.029' S 174° 49.949' E
Waypoint	36° 27.067'S 174° 49.681' E	
Bearing	240.6° Mag to Beehive mark	
Chart	NZ5227	





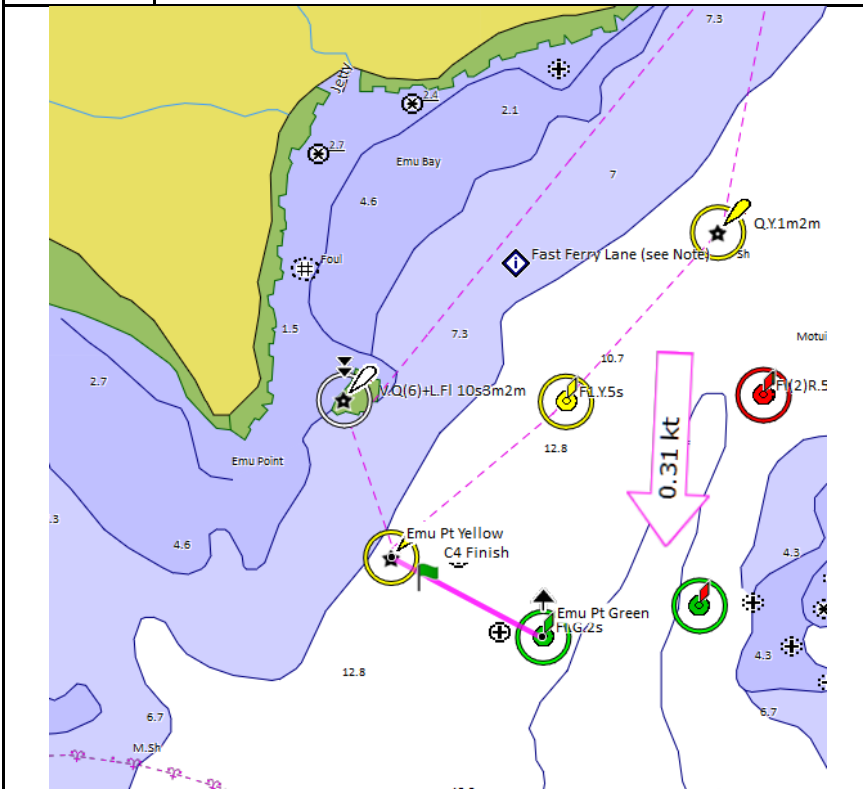
Weiti Boating Club



THE JOURNEY STARTS HERE



Course 4: Islington Bay via Rakino Channel		
Distance	15 miles	Time Limit: 5 hours
Course	Motutapu Is [S], Finish 4 (If Finish Vessel is on station will be positioned outside the Emu Point Yellow and Green Buoys and will not form part of the finish line)	
BBQ	Decided on the day	
Finish 4: Islington Nthn	[Shortened course: Rakino finish]	
Transit	Emu Pt Green	36° 48.171' S 174° 55.300' E
	Emu Pt Yellow	36° 48.046' S 174° 55.027' E
Waypoint	36° 48.077' S 174° 55.094' E	
Bearing	280.2° Mag to Emu Pt Yellow	
Chart	NZ5324	





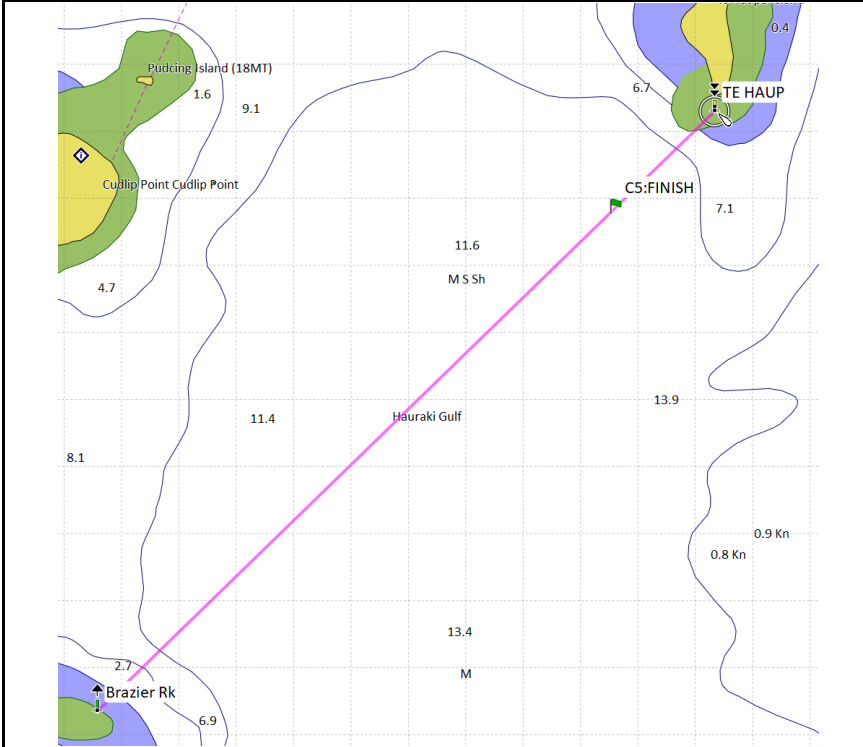
Weiti Boating Club



THE JOURNEY STARTS HERE



Course 5: Mahurangi	
Distance	13.2 miles
Time Limit:	5 hours
Course	Navy Buoy [P], Te Haupa Is. (Saddle Is.) [S], Finish 5 (Finish Boat to Port if in position)
BBQ	Otarawao (Sullivan's) Bay
Finish 5: Mahurangi	[Shortened course: Navy Buoy finish]
Transit	Brazier Rk [P] 36° 31.765' S 174° 43.758' E
	Te Haupa Island Light [S] 36° 30.870' S 174° 44.834' E
Waypoint	36° 31.012' S 174° 44.663' E
Bearing	24.7° Mag to Te Haupa Is Light
Chart	NZ5321





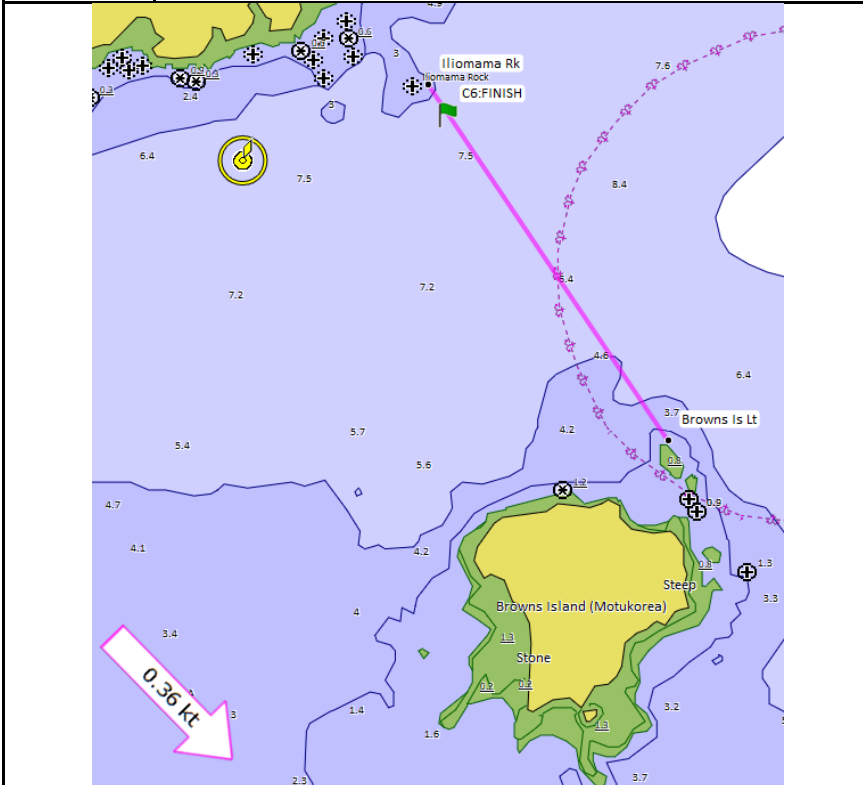
Weiti Boating Club



THE JOURNEY STARTS HERE



Course 6: Islington Bay via Rangitoto	
Distance	13.9 miles
Time Limit:	5 hours
Course	Rangitoto [P], Iliomona Rock [P], Finish 6 (Finish Boat to Starboard if in position)
BBQ	Decided on the day
Finish 6: Islington	[Shortened course: McKenzie finish]
Transit	Iliomama Rk 36° 48.501' S 174° 53.192' E
	Browns Is Lt 36° 49.436' S 174° 53.928' E
Waypoint	36° 48.581' S 174° 53.252' E
Bearing	308.2° Mag to Iliomama Light
Chart	NZ5324





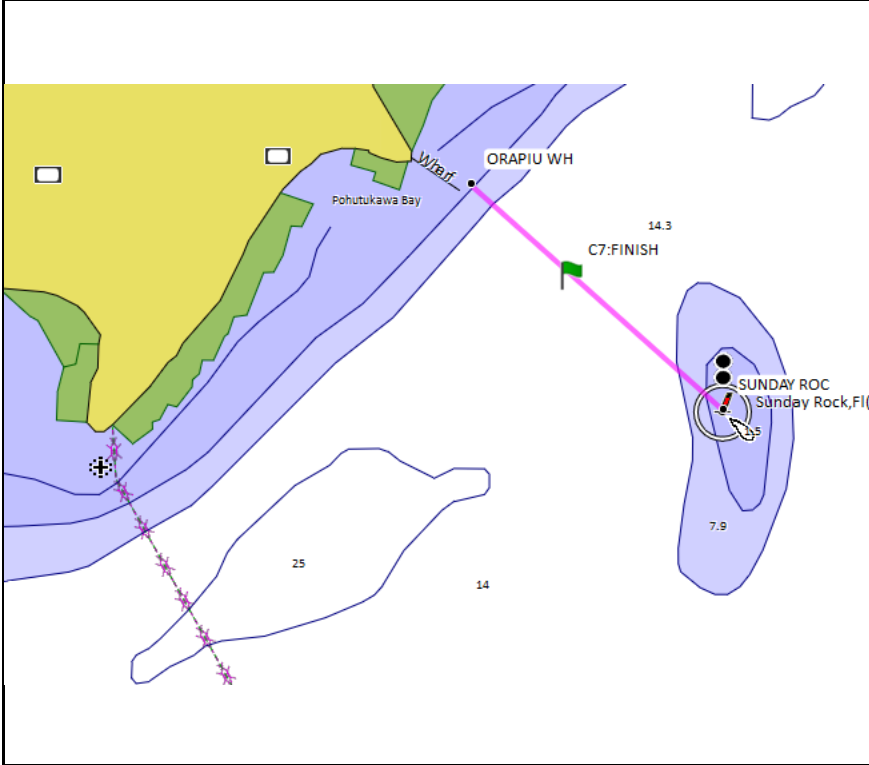
Weiti Boating Club



THE JOURNEY STARTS HERE



Course 7: Ponui – Shark Bay			
Distance	23.8 miles	Time Limit: 7 hours	
Course	Rakino [P], Waikeke [P], Finish 7 (Finish Boat to Port if in position)		
BBQ	Shark Bay or alternate. TBD		
Finish 7: Shark Bay		[Shortened course: Rakino finish]	
Transit	Sunday Rock	36° 50.874' S	175° 09.208' E
	Orapiu Bay Wharf	36° 50.692' S	175° 08.969' E
Waypoint	36° 50.765' S 175° 09.065' E		
Bearing	114.1° Mag to Sunday Rock		
Chart	NZ5324		





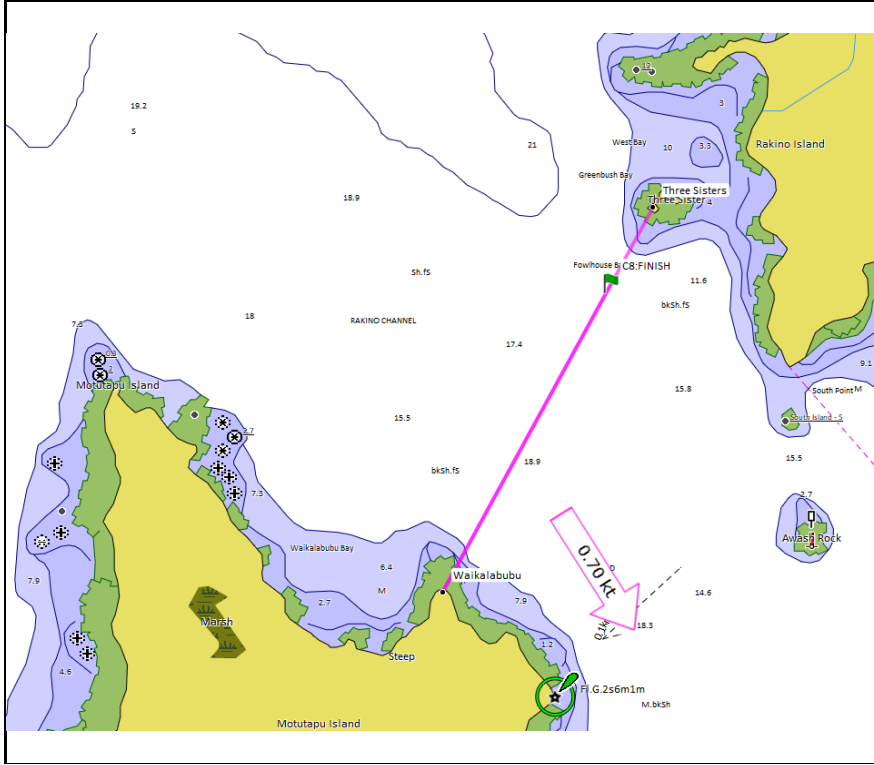
Weiti Boating Club



THE JOURNEY STARTS HERE



Course 8: Rakino Island – Woody Bay			
Distance	9.8 miles	Time Limit: 5 hours	
Course	Direct, Finish 8 (Finish Boat to Starboard if in position)		
BBQ	Woody Bay or alternative		
Finish 8: Rakino		[No alternate finish]	
Transit	Waikalabubu	36° 44.240' S	174° 55.768' E
	Three Sisters	36° 43.396' S	174° 56.308' E
Waypoint	36° 43.561' S 174° 56.202' E		
Bearing	7.7° Mag to Three Sisters		
Chart	NZ5324		





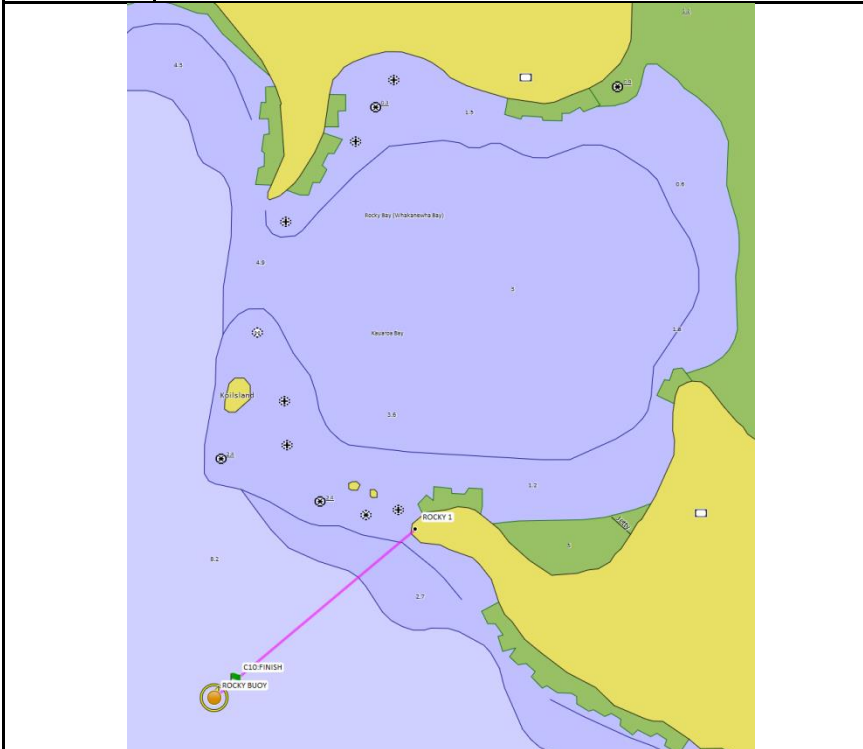
Weiti Boating Club



THE JOURNEY STARTS HERE



Course 10: Waiheke – Rocky Bay			
Distance	18.9 miles	Time Limit: 5 hours	
Course	Rakino [P], Finish 10 (Finish Boat to Port if in position)		
BBQ	To be advised		
Finish 10: Rocky Bay		[Shortened course: Rakino finish]	
Transit	Kauraroa Bay Headland	36° 49.770' S	175° 03.592' E
	Rocky Bay Buoy	36° 49.980' S	175° 03.300' E
Waypoint	36° 49.957' S 175° 03.327' E		
Bearing	208.8° Mag to Rocky Buoy		
Chart	NZ5324		





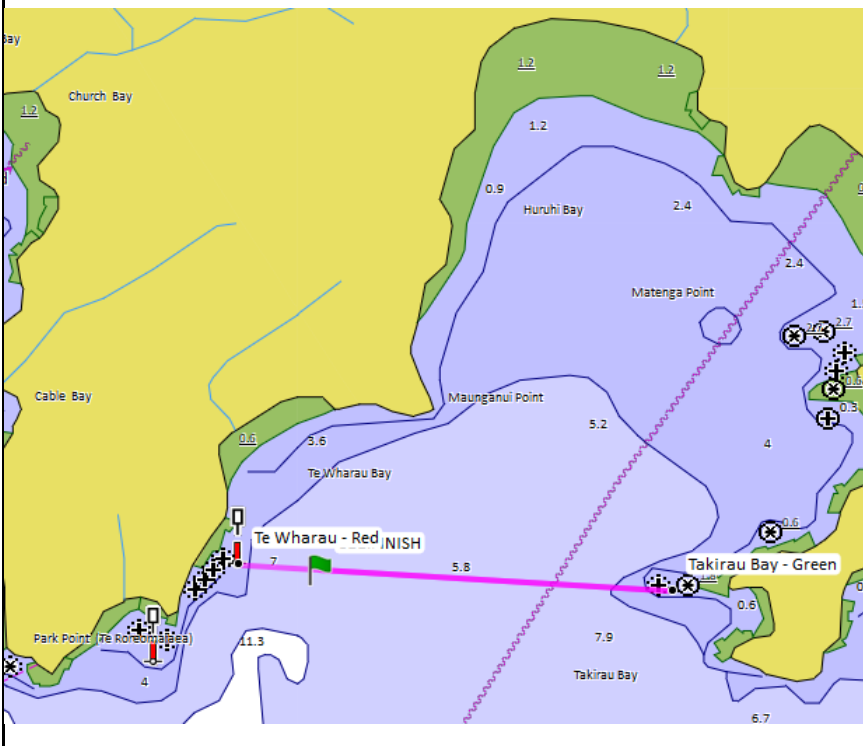
Weiti Boating Club



THE JOURNEY STARTS HERE



Course 11: Waiheke – Putiki Bay (Huruhi Bay)			
Distance	17.1 miles	Time Limit: 5 hours	
Course	Haystack [S]), Rakino [S], Finish 11 (Finish Boat to Starboard if in position)		
BBQ	Te Wharau Bay		
Finish 11: Huruhi Bay	[Shortened course: Rakino finish]		
Transit	Te Wharau - Red	36° 48.533' S	174° 59.852' E
	Takirau Bay - Green	36° 48.589' S	175° 00.937' E
Waypoint	36° 48.543' S 175° 00.059' E		
Bearing	254.1° Mag to Te Wharau - Red		
Chart	NZ5324		





Weiti Boating Club

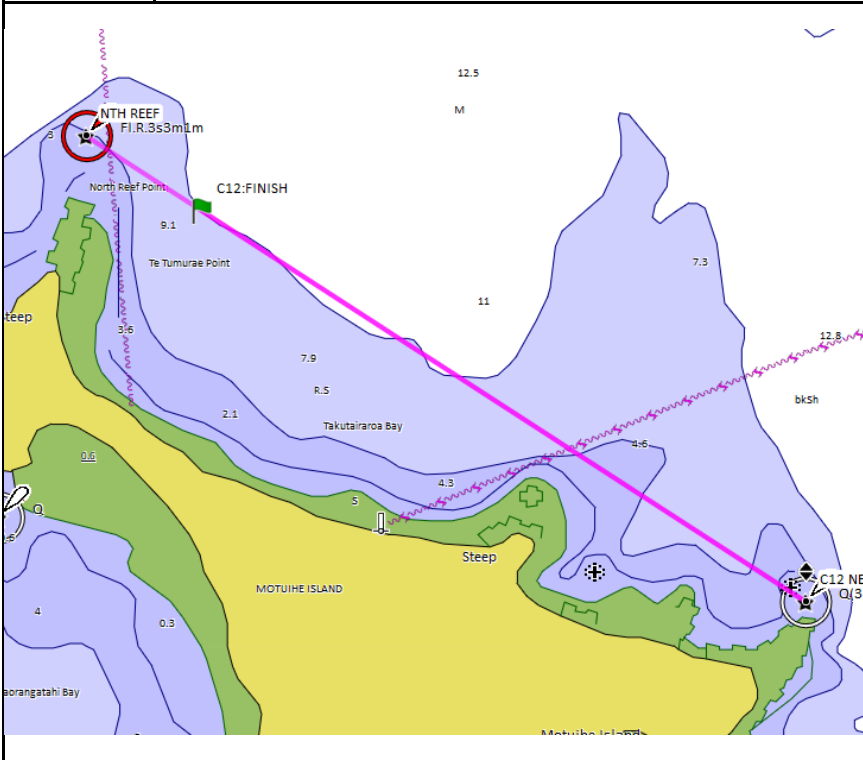


THE JOURNEY STARTS HERE



Course 12: Motuihe Is

Distance	15.5 miles	Time Limit: 5 hours	
Course	Haystack [S], Rakino [S], Motutapu Is. [S], Finish 12 (Finish Boat to Port if in position)		
BBQ	Motuihe Island		
Finish 12: Motuihe	[Shortened course: Rakino finish]		
Transit	Motuihe NE Point	36° 48.527' S	174°57.658' E
	North Reef Light Fl.R.3s	36° 47.700' S	174°56.200' E
Waypoint	36° 47.871' S 174° 56.473' E		
Bearing	285.1° Mag to Nth Reef mark		
Chart	NZ5324		





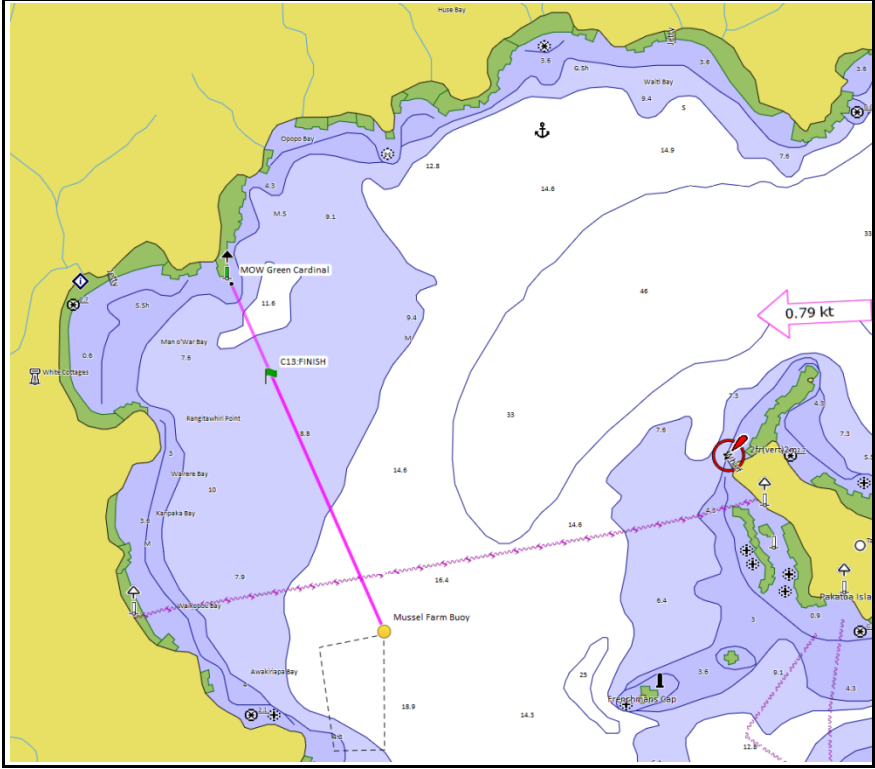
Weiti Boating Club



THE JOURNEY STARTS HERE



Course 13: Waiheke - Man o War Bay			
Distance	26.1 miles	Time Limit: 7 hours	
Course	Rakino Is. [P], Waiheke Is. [S], Finish 13 (Finish Boat to Port if in position)		
BBQ	Man o' War Bay		
Finish 13: Man O War	[Shortened course: Rakino finish]		
Transit	MOW Green Cardinal	036°47.115' S	175°09.819' E
	Mussel Farm Buoy	036°48.028' S	175°10.290' E
Waypoint	36° 47.356' S 175° 09.943' E		
Bearing	318.0° Mag to MOW Green Cardinal		
Chart	NZ5324		





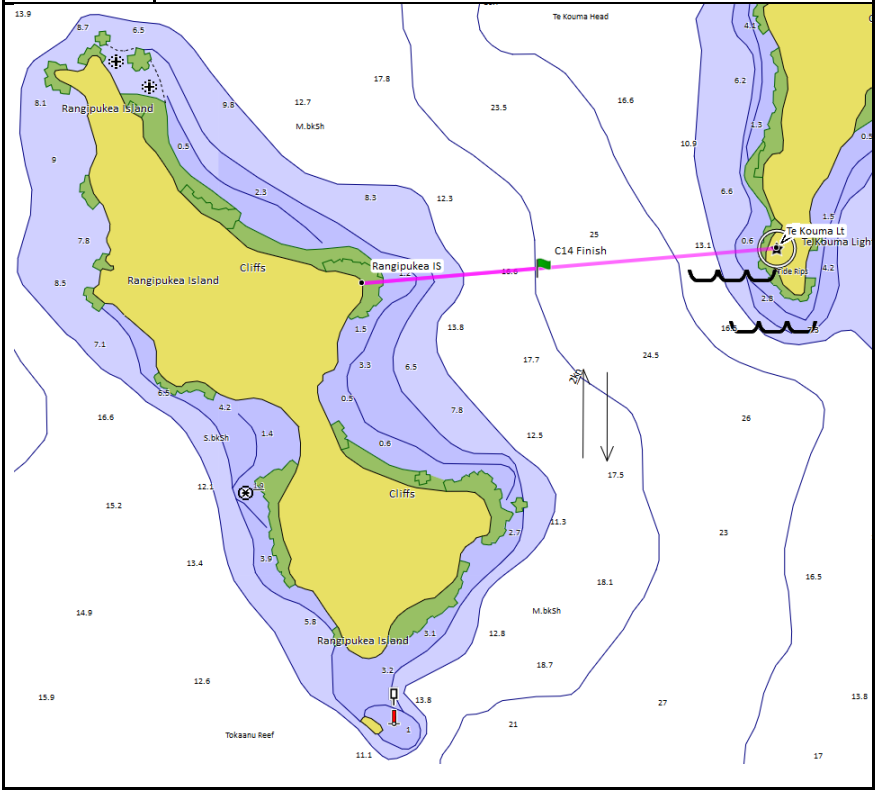
Weiti Boating Club



THE JOURNEY STARTS HERE



Course 14: Te Kouma	
Distance	34.6 miles
Time Limit:	none
Course	Start, Rangipukea Is (S), Finish 14 (Finish Boat to Starboard if in position)
BBQ	To be advised
Finish 14: Te Kouma	[Shortened course: Rakino finish]
Transit	Te Kouma Light
	036°49.459' S 175°25.406' E
	Rangipukea Is (East end)
	036°49.501' S 175°24.824' E
Waypoint	036°49.483' S 175°25.080' E
Bearing	65.3° Mag to Te Kouma Light
Chart	NZ5324





Weiti Boating Club



THE JOURNEY STARTS HERE



Course 16: Kawau via Rabbit – Bon Accord			
Distance	18.4 NM	Time Limit: 5 hours	
Course	Start – Navy Buoy (P), Motuora Island (S) Rabbit Is. Red Buoy (S) - Finish		
BBQ	To be advised		
Finish 16			
Transit	Momona Point	36° 25.680' S	174° 48.960' E
	Martello Rock	26° 25.884' S	174° 48.390' E
Waypoint	36° 25.850' S 174° 48.500' E		
Bearing	045°M to Momona Point		
Chart	NZ5227		

