



Weiti Boating Club (INC)



## WBC Summer Cruising Series 2023 – 24

Organising Authority Weiti BC

Combined races in conjunction with Gulf Harbour YC

### Weiti Boating Club

Fairhaven Walk Whangaparaoa.  
P: (09) 424 5905 W: weiti.co.nz

### Gulf Harbour Yacht Club

1299 Laurie Southwick Pde, Gulf Harbour.  
P: (09) 424 2118 W: ghyc.co.nz

## Notice of Race and Sailing Instructions

### 1.0 Rules

- 1.1 The series will be governed by the 'rules' as defined in *The Racing Rules of Sailing*
- 1.2 For Keel Yachts the YNZ Safety Regulations Part II, Category 4 shall apply.
- 1.3 For Trailer Yachts the YNZ Safety Regulations Part V, Category A shall apply.
- 1.4 All boats shall carry or tow a dinghy (fully inflated or rigid)
- 1.5 All yachts must be equipped with a VHF radio capable of transmitting and receiving on all channels. **A listening watch must be maintained in the Cockpit on VHF Ch77** while underway either with a Handheld or Cockpit fitted VHF radio.
- 1.6 No spinnakers, Code zeros or extras may be set. Extras are defined as sails not normally used to advantage to windward. Headsails may be boomed out using spinnaker booms but shall only be carried on a permanent load bearing forestay with only one headsail per forestay.
- 1.7 For **Skippers sailing single handed** - see additional safety requirements in 16.6 below.
- 1.8 *RRS 52* will be changed as follows: Autohelms, electric winches are allowed.
- 1.9 *RRS Appendix T* will apply (Arbitration)

### 2.0 Eligibility & Entry

- 2.1 Entries will be accepted from Keel Yachts and Trailer Yachts registered with YNZ and whose owners/skippers are financial members of a yacht club affiliated to YNZ.
- 2.2 GHYC & WBC reserve the right to accept or refuse any entry.
- 2.3 Entries must be made to either the Gulf Harbour Yacht Club or the Weiti Boating Club using the online entry form on the Club's website, with payment of the designated entry fee. **Entrants must provide a mobile phone number that they can be contacted on while racing.**  
Entry Fees: **\$100** for series or **\$17** per race Late series Entry **\$120**
- 2.4 Only series entrants will be eligible for series points. Entries for individual races must be received and fees paid by 2000 hrs on the evening preceding a scheduled race day.
- 2.5 Late entries for individual races may also be accepted at the discretion of the Race Committee or Race Officer on the day of the scheduled race.
- 2.6 **Series entries to be received by 1600 hrs on Wednesday 18 Oct 2023 (minimum 4 series entries required to run the series).** Late series entries will be accepted up to 1600 hrs. on Friday 10<sup>th</sup> November 2023 subject to payment of a late fee. Any races completed prior to a completed entry form and payment being received will not be eligible for series points and will be scored DNC.
- 2.7 **WBC Members: Payment of entry fees by electronic payment to Bank Acct 03 0419 0006778 00.**

Details to be loaded with payment:

Particulars = **Boat Name** Code = **Series Name** Ref = **Series or Race #**



Weiti Boating Club (INC)



### 3.0 Notices to Competitors

- 3.1 Notices may be posted on one or more of the following:
  - 3.1.1 The Weiti Boating Club Website [weiti.co.nz](http://weiti.co.nz)
  - 3.1.2 The Gulf Harbour Yacht Club Website [ghyc.co.nz](http://ghyc.co.nz)
  - 3.1.3 Advised by Txt to the mobile number given in 2.3 above.
  - 3.1.4 Advised by email to the email address loaded with the online entry form
  - 3.1.5 On the official notice boards located at the GHYC & WBC clubrooms.

### 4.0 Changes to Sailing Instructions

- 4.1 Any change to the sailing Instructions will be posted at least 2 hours prior to the scheduled start of the day's racing, on the day it will take effect.
- 4.2 Notices of cancellation will endeavour to be sent by email and /or Txt to the email address /mobile number (refer 3.0 above), at least 1 hour prior to the scheduled start of the day's racing.

### 5.0 Schedule of Races

Race	Day	Date	Destination	Other	Warning Signal	High tide	
						Time	Ht
Race 1	Sa	21/10/2023	Kawau [2]	Tim Couldry Cup	1000	1253	2.9
Race 2	Sa	4/11/2023	Motuhie [12]	Roy Langley Memorial Trophy	1000	1254	2.8
Race 3	Sa	25/11/2023	Waiheke [11]	Peter Salmond Memorial Trophy	1000	0607	2.9
Race 4	Sa	16/12/2023	Waiheke [9]	Arcus Family Trophy	1000	1044	3.1
Race 5	Sa	27/01/2024	Mahurangi [5]	Cedric Osbourne Memorial Trophy	0830	0932	2.9
Race 6	Sa	10/02/2024	Islington [6]	R Green Trophy	1000	0823	3.1
Race 7	Sa	02/03/2024	TBA	John Groos Cup	1000	1245	2.7
Race 8	Fr	29/03/2024	Waiheke [13]	Easter - Fred Barker Memorial Trophy	1000	1059	2.8

*\*Races 1, 4 and 8 combined with GHYC. Race 4 run under GHYC Control.*

### 6.0 Class Flag

- 6.1 All boats will race in one class and fly a White class flag.

### 7.0 Racing Area

- 7.1 The races will be held on the waters of the Hauraki Gulf and Waitemata Harbour.

### 8.0 Race control

- 8.1 The Race Committee shall either provide a start vessel or designate one boat participating in the race as the **Race Start Vessel** and notify all entrants accordingly.
- 8.2 The Race Committee shall designate one boat participating in the race as the **Committee Boat** for the race and notify all entrants accordingly. Race control will move from the **Race Start Vessel** to the **Committee Boat** following completion of the start sequence.
- 8.3 The Race Committee may provide a **Race Finish Vessel**. If so, all entrants will be notified accordingly that the finish procedure will be as per 11.2 below.



Weiti Boating Club (INC)



## 9.0 Course to be sailed

- 9.1 The Courses are detailed in Addendum B. Refer to WBC Cruising Supplement for detailed finish line coordinates.
- 9.2 On the evening prior to the race, and not later than 2000 hours, the course and destination may be displayed on the Club Notice Board along with the nominated starting procedure (as in 10.1 below)
- 9.3 The course may be changed/ or shortened on the day of the race due to weather conditions at the discretion of the Race Officer. Any changes made ashore will be at least 1 hour prior to the scheduled start of the day's race, and be notified to competitors (as in 3.0 above)
- 9.4 The **Committee Boat** may also change or shorten the course on the water by advising on VHF Radio Ch 77. Such announcements will be made at 15 and 45 minutes past the hour for the duration of the race. This changes *RRS 32*.

## 10.0 The Start

### 10.1 Start line.

#### **10.1.1 For GHYC races:**

**(Procedure 1)** the start line will be between a staff displaying an orange flag on the Race Start Vessel at the starboard end and the Southeast edge of Kotanui Island at the port end. This is detailed in addendum A.

**(Procedure 2)** The start line is a transit line between the outer Gulf Harbour Marina RED marker (to Port) and the Southern face of Kotanui Island (Frenchman's Cap) (to Starboard). There will NOT be a start boat and there will NOT be any sound signals. The race will start at 1000 hours (GPS Time) This changes *RRS 26*.

**GHYC controlled combined races;** start line will be as described in 10.1.1(**Procedure 1**) above.

- 10.1.2 **WBC controlled combined races;** the start line will be in the vicinity of Arkles Bay. The starting line will be between a staff displaying an orange flag on the Race Start Vessel at the starboard end and an orange conical buoy at the port end. This is detailed in addendum A.

- 10.2 **GHYC (Procedure 1) and WBC Races** will be started according to *RRS 26* with the warning signal for races (refer table 5.0 above).

- 10.3 A boat that does not start within 10 minutes after her starting signal will be scored DNS (Did Not Start) without a hearing. This changes *RRS A4 and A5*. *Note: Boats that do not come to the start line will be scored as DNC.*

- 10.4 In addition to the provisions of *RRS 29*, if any boat(s) is identified "on course side" at the starting signal, the race committee shall attempt to broadcast her sail number or name on VHF Radio Ch 77. This does not absolve competitors of their responsibility to respond to the flag signals of the Race Committee Vessel. Failure to make a broadcast or to time it accurately will not be grounds for redress. This changes *RRS 62.1 (a)*. (*Redress*)



Weiti Boating Club (INC)



**11.0 The Finish**

- 11.1 The finishing line will be as described in Addendum B.
- 11.2 If a Race Finish Vessel has been advised in the SI's (refer 8.3 above) then this will be positioned on the designated finish line and boats shall take this Finish Vessel as follows:
  - 11.2.1 For Courses: 5, 7, 9, 10, 12 and 13 the Finish Vessel shall be left to **PORT**.
  - 11.2.2 For Courses: 1, 2, 3, 6, 8, 11 and 14 the Finish Vessel shall be left to **STARBOARD**.
  - 11.2.3 For Course 4: The Finish Vessel to be positioned outside the Emu Point Yellow and Green Buoys and will not form part of the finish line.
- 11.3 In the absence of a Race Finish Vessel being on station, all boats shall record their own finish time in hours, minutes, and seconds (preferably using a GPS) and finishing times are to be sent by Txt to the mobile number nominated by the Controlling Club as soon as practicable after finishing the race.
- 11.4 Any boat not having advised its finish time after 60 minutes have elapsed from the last boat finishing shall be recorded DNF (Did Not Finish).

**12.0 Time limits**

12.1 The time limits to be applied for each race format are as below:

Race Format	Time limit for first boat	Time allowed for other boats
Cruising - Up to 20 miles	5 hours	+ 2 hours
Cruising - More than 20 miles	7 hours	+ 2 hours
Cruising – Course 14 Te Kouma	No time limit	No time limit

- 12.2 If no boats finish within the “Time limit for first boat” then the race will be abandoned.
- 12.3 Conditional upon 12.2 above, a boat failing to finish within the “time allowed for other boats” will be scored DNF (Did Not Finish). This changes *RRS 35 and A4 and A5*
- 12.4 If a course is shortened, the original time limit remains. If the destination is changed (i.e., a new course number is advised), then the time limit for the new course will apply.
- 12.5 The Committee Boat may change or shorten the course on the water by advising on VHF Radio Ch 77. Such announcements will be made at 15 and 45 minutes past the hour for the duration of the race. This changes *RRS 32*. Failure to receive this information shall not be grounds for Redress. This changes *RRS62.1(a)*

**13.0 Protests and requests for Redress**

- 13.1 For protests where only a rule of part 2 (When boats Meet) is alleged to have been broken, an arbitration hearing will be offered prior to any hearing.
- 13.2 Any boat wishing to lodge a protest must notify the race committee boat within 60 minutes of the last boat finishing and is to have protest lodged at GHYC/WBC clubrooms by 1800 hours on the Monday following the race.

**14.0 Handicapping**

- 14.1 Handicapping for WBC only races will be in accordance with the WBC Handicapping system.
- 14.2 Initial handicaps will be agreed between the two clubs.

**15.0 Scoring**

- 15.1 Five races are required to be completed to constitute a series.
- 15.2 The best seven (7) boat scores will count towards series.
- 15.3 *RRS 2021-2022 Appendix A5.3* will apply.



**Weiti Boating Club (INC)**



**16.0 Safety Regulations**

- 16.1 **A boat that retires from a race shall notify the Race Committee either via VHF Ch.77, Phone or Txt (acknowledgement is required) or in person, as soon as practicable after they have retired. They shall also inform other competitors on VHF Ch 77**
- 16.2 All entrants are required to register with the committee boat via VHF Radio Ch 77, before the warning signal advising the boat name and the number of people on board.
- 16.3 Boats may be inspected for compliance with the safety regulations at the discretion of the race committee.
- 16.4 **Skippers are required to maintain a written list on board of all crew for the day (including the skipper), their next-of-kin or contact person, and a contact phone number.** All crew must be made aware of the location of this list before departing their marina/mooring.
- 16.5 The Organising Authority **recommends that ALL competitors wear a Personal Floatation Device (Lifejacket)** that meet New Zealand Standard 5823:2005 (inflatable type 401 150N) with a crotch strap while underway.
- 16.6 For any yachts sailing **Single Handed** the following additional safety regulations apply:
  - 16.6.1 Skippers must wear an approved lifejacket whilst racing.
  - 16.6.2 Skippers must carry on their person a means of communication to self-initiate a means of rescue in the event that they fall overboard.

**17.0 Radio Communications**

- 17.1 All radio communication will be on **VHF Radio Ch.77**
- 17.2 Failure to receive a radio message from the Race Committee will not be grounds for redress. This changes *RRS 62.1(a)*
- 17.3 The call sign for the Race Committee Vessel is
  - GHYC controlled races ***“Gulf Harbour Race Control.”***
  - WBC controlled races ***“Weiti Race Control.”***

**18.0 Prizes**

- 18.1 Day prizes may be awarded on the designated beach as soon as practicable after each race.
- 18.2 Series results will be advised as soon as practicable following the completion of Race 8.
- 18.3 Series prizes may be presented during the WBC prize giving.

**19.0 Insurance**

- 19.1 Each participating boat shall be insured with valid Third-Party insurance – liability insurance with a minimum cover of \$5M per incident or equivalent.

**20.0 Disclaimer of Liability**

- 20.1 Competitors participate in this series entirely at their own risk. See RRS rule 4, Decision to Race. The responsibility for a boat’s decision to participate in a race or to continue racing is hers alone.
- 20.2 The Organising Authority and/or any sponsor associated with this series shall not be responsible for the seaworthiness of a boat whose entry is accepted and/or the sufficiency and/or adequacy of its equipment or the competence of its skipper and crew.
- 20.3 The Organising Authority will not accept any liability for material damage or personal injury, or death sustained in conjunction with, before, during, or after this series.

For further details contact the administrative office at either:

**Weiti Boating Club**

P: 09 424 5905 | E: [info@weiti.co.nz](mailto:info@weiti.co.nz) | W: [weiti.co.nz](http://weiti.co.nz)

**Gulf Harbour Yacht Club**

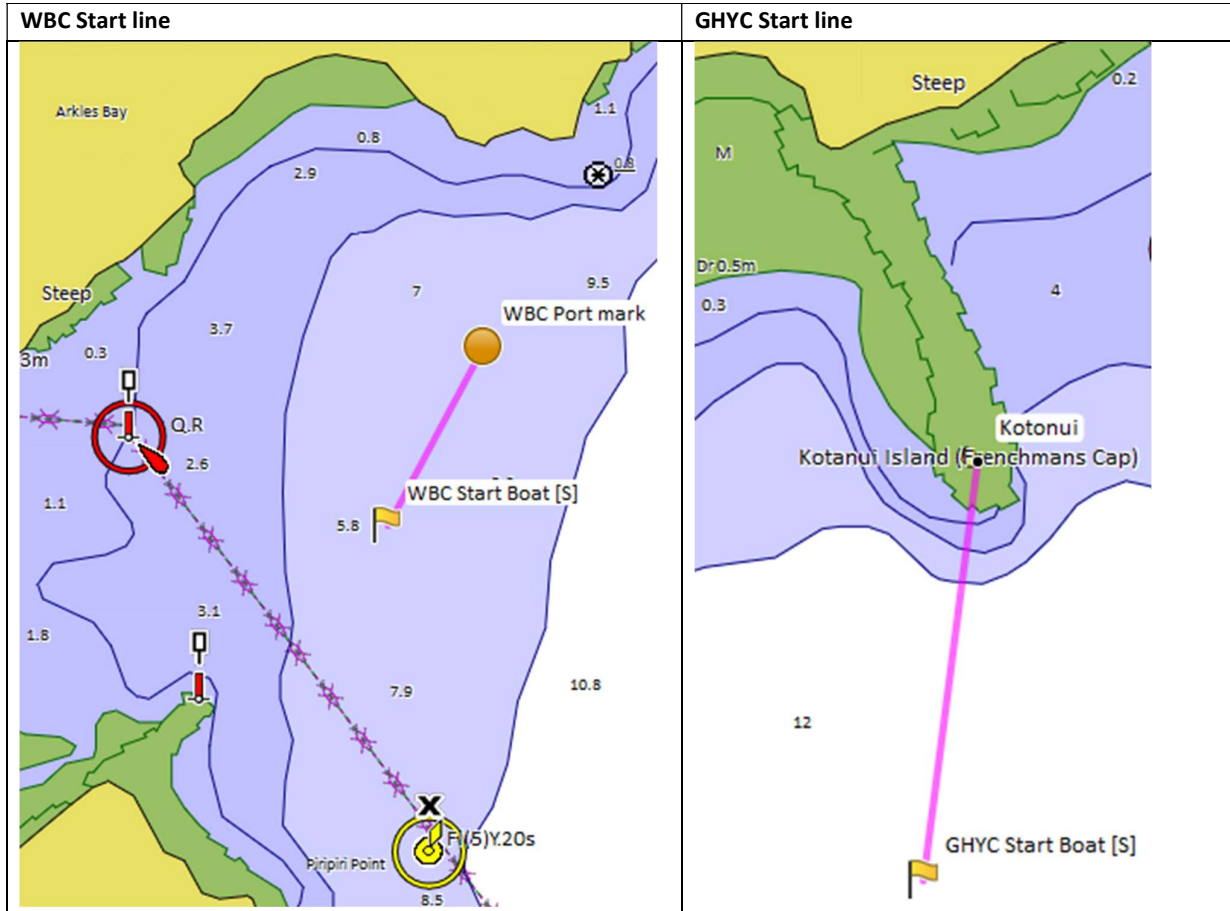
P: 09 424 2118 | E: [admin@ghyc.co.nz](mailto:admin@ghyc.co.nz) | W: [ghyc.co.nz](http://ghyc.co.nz)



Weiti Boating Club (INC)



**Addendum A: Start lines**



**Addendum B: Courses & Finish lines**

**1. Cruising courses:** All courses – boats must pass to seaward of Wellington rock

<u>Course</u>	<u>Course destination</u>	<u>Course details</u>	<u>NM's</u>
1	Kawau – Bostaquet Bay	Navy Buoy (P)	14.8
2	Kawau via Motuora – Bon Accord	Navy Buoy (P), Motuora Is. (S), Motuketekete Is (P)	17.2
3	Kawau – Mansion House Bay	Navy Buoy (P), Passage Reef. (P), Beehive Is (P)	14.7
4	Islington Bay via Rakino Channel	Motutapu Is (S)	15.0
5	Mahurangi	Navy Buoy (P), Saddle Island (S)	13.2
6	Islington Bay	Rangitoto(P), Iliomama Rock (P)	13.9
7	Ponui – Shark Bay	Rakino (P), Waiheke (P)	23.8
8	Rakino Island – Woody Bay	Direct	9.6
9	Waiheke – Oneroa	Rakino (P)	14.5
10	Waiheke – Rocky Bay	Rakino (P)	18.9
11	Waiheke – Huruhi Bay	Rakino (P)	15.9
12	Motuihe Island	Rakino (P), Motutapu (S)	13.9
13	Waiheke – Man-O' War Bay	Rakino (P), Waiheke(S)	26.1
14	Te Kouma	Rangipukea Is (S)	34.2

**Note:** See WBC Cruising Supplement for detailed finish line coordinates



Weiti Boating Club (INC)



2. **Day courses:** to be used in the event that conditions prevent one of the above courses being sailed. The start and finish line for these courses will be advised on the day.

Course	Course details	NM's
15	Start – GH Buoy (P) - Navy Buoy (S) – GH Buoy (S) – Finish	9.5
16	Start – GH Buoy (S) - Marine-Sth (P) – GH Buoy (P) – Finish	8.2
17	Start – GH Buoy (S) - Marine-Nth (P) – Torbay Buoy (P) – GH Buoy (P) – Finish	12.0
18	Start – GH Buoy (S) - Marine-Nth (P) – Marine-Sth (P) – GH Buoy (P) – Finish	9.7
19	Start – GH Buoy (S) - Marine-Nth (P) – Marine-Sth (P) – Navy Buoy (P) - GH Buoy (S) – Finish	15.7
20	Start – GH Buoy (P) - Navy Buoy (S) - Marine-Sth (S) - Marine-Nth (S) – GH Buoy (P) – Finish	15.7
21	Start – GH Buoy (S) – Torbay Buoy (S) – Marine Nth (S) – GH Buoy (P) - Finish	15.3

### 3. Mark locations

Mark locations are as per table below:

Mark	Lat.	Long.	Notes
GH Buoy (Gulf Harbour Yellow Buoy)	36 39.130S	174 48.030 E	
McKenzie Buoy	36 46.721 S	174 49.115 E	
East Cardinal Buoy (approx. 1 mile east of Tiritiri)	36 36.497 S	174 55.340 E	
Torbay Buoy (approx. 1.5 miles east of Torbay)	36 42.500 S	174 47.300 E	
Navy Buoy (Whangaparaoa Outermost / Eastern buoy)	36 36.922S	174 50.654 E	
Haystack (Orarapa Island)	36 41.891 S	174 57.266 E	
Marine-Nth (Northern Long Bay Marine Reserve marker) Piripiri Point	36 39.761S	174 45.282E	
Marine-Mid (Middle Long Bay Marine Reserve marker)	36 40.451S	174 45.900E	
Marine-Sth (Southern Long Bay Marine Reserve marker)	36 41.122 S	174 46.488 E	