
How you can meet the sewage rules

Think before you flush.

Get to know the permitted and prohibited areas for untreated sewage discharges (*see the map overleaf or download the app*).

- Use toilets on shore before you depart
- Fit a holding tank
- Use pump-out facilities where available, such as those at many of Auckland's marinas.

Can you install a treatment system?

There are devices available that can treat sewage onboard your boat. Treated sewage can be discharged in most areas away from marine farms, with different requirements depending on whether the treatment system is Grade A or Grade B. The system grades are described in the Resource Management (Marine Pollution) Regulations 1998. Search for 'marine pollution' at www.legislation.govt.nz.

Useful information

Download the 'Sewage systems for recreational boats' guide from www.mfe.govt.nz.

Read the Maritime New Zealand summary of the regulations for sewage discharge and garbage disposal, and the sewage treatment standards, at www.maritimenz.govt.nz.

Reporting marine pollution

To report pollution incidents, phone our compliance team on 09 377 3107.

Boat discharge rules app

The free offline app provides your location in relation to the untreated sewage discharge restrictions. For instructions search for 'boat sewage' at www.aucklandcouncil.govt.nz.

Marine pollution other than sewage

Rubbish

Stow it, don't throw it. No rubbish can be dumped in the sea or on land. Please take your rubbish home.

Hull biofouling and marine pests

All boat owners need to make sure their hull is regularly checked and cleaned to avoid spreading marine pests. Cleaning of hull biofouling is prohibited in areas identified in the Auckland Unitary Plan as Significant Ecological Areas and adjacent to the Hauraki Gulf conservation islands.

A slime layer on a boat hull, regardless of origin, may be cleaned in-water outside of the prohibited areas. If the boat has more than a slime layer, there are additional requirements for cleaning depending on where the boat has been, the level of fouling, and the species present.

See www.marinepests.nz.

Cleaning debris and antifouling

When you clean your boat hull, make sure you collect any contaminant material or debris and remove it from the foreshore, seabed and water. Use collection devices such as ground covers and nettings, or suction pumps for debris located in-water.

Try to use low impact antifouling products such as non-copper, low copper formulation or low copper release antifouling paint. Check how to use antifouling paint safely under 'painting your boat' at www.epa.govt.nz.

Boat sewage discharges

Auckland's marine pollution rules

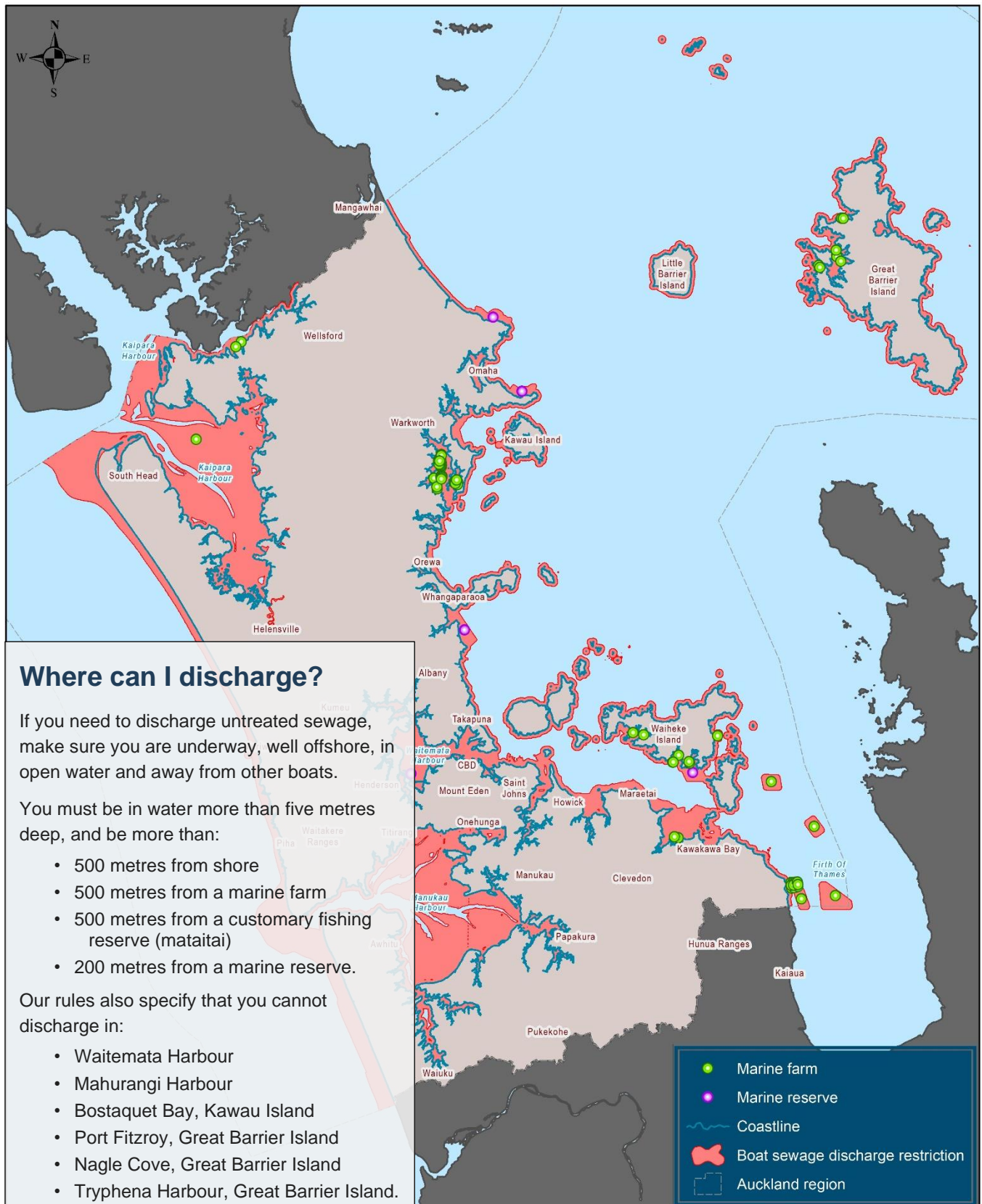


Phone 09 301 0101 or visit
aucklandcouncil.govt.nz

Treat it, flush it offshore or pump it out!

Untreated sewage can contaminate the shellfish we eat, or make water unsafe for swimming, for a long time after it's discharged. Play your part in protecting our harbours by disposing of your boat sewage properly.

For more information visit aucklandcouncil.govt.nz - search for "boat sewage".



Note that the marine farms identified are consented but may not yet be constructed.